

WESTEN



SPARE PARTS CATALOGUE

- MARCH 2007 -

HOW TO READ THE SPARE PARTS CATALOGUE

In the spare part catalogue, after the exploded diagrams, there are the components lists of the boilers; this is the meaning of the different columns:

Pos.	Identification number of the component in the exploded diagram of the boiler.
Description	Short description of the component.
Code	BAXI S.p.A. code of the component.
Tab. XX	XX is the exploded diagram number of the boiler taken into consideration.
From serial number	Date (year and week) identifying the beginning of production of a component (taken from the serial number of the boiler). e.g. B005: year 2000 (B identifies the decade 2000-2009; 0 identifies the year) – 5th week . If the box is empty, the component is in use from the beginning of production of the boiler.
To serial number	Date (year and week) identifying the end of production of a component (taken from the serial number of the boiler). e.g. B012: year 2000 (B identifies the decade 2000-2009; 0 identifies the year) – 12th week . If the box is empty, the component is still in use.
Interchangeable	It identifies the interchangeability between the new component and the old one. YES: components are interchangeable. NO: components are <u>not</u> interchangeable.

BOILERS CONNECTION BOARD - EXPLODED VIEW
TABELLA COLLEGAMENTO CODICE CALDAIA - ESPLOSO
TABLERO UNIÓN CALDERA - EXPLOSIONADO
TABLEAU CONNECTION CODEX CHAUDIERE - VUE ECLATEE

BOILER CODE	BOILER DESCRIPTION	EXPLODED REF.
CODICE CALDAIA	DESCRIZIONE CALDAIA	RIF. ESPLOSO
CODIGO CALDERA	DESCRIPCION CALDERA	REF. EXPLOSIONADO
CODE CHAUDIÈRE	DESCRIPTION CHAUDIÈRE	RÉF. EXPLOSÉE
BYH432243970	QUASAR 24	Tab 5
BYH432243971	QUASAR 24	Tab 5
BYH432243972	QUASAR 24	Tab 5
BYH432243973	QUASAR 24	Tab 8
BYH432243974	QUASAR 24	Tab 8
BYH436243970	QUASAR 24F	Tab 3
BYH436243971	QUASAR 24F	Tab 3
BYH436243972	QUASAR 24F	Tab 3
BYH436243973	QUASAR 24F	Tab 211
BYH436243974	QUASAR 24F	Tab 211
BYH436243975	QUASAR 24F	Tab 211

QUASAR

Pos	Code	Description code	BYH432243970	BYH432243971	BYH432243972	BYH432243973	BYH432243974	BYH432243975	BYH436243970	BYH436243971	BYH436243972	BYH436243973	BYH436243974	BYH436243975	To serial number	From serial number	Interchangeable:
29	5212220	REAR INSULATING PANEL	•	•	•	•	•	•	•	•	•	•	•	•			
29	5213280	INSULATING PANEL	•	•	•	•	•	•	•	•	•	•	•	•			
30	5212260	FRONTAL INSULATING PANEL							•	•	•	•	•				
30	5212540	FRONTAL INSULATING PANEL	•	•	•	•	•										
30	5213370	INSULATING PANEL							•	•	•	•	•				
30	5213380	FRONTAL INSULATING PANEL	•	•	•	•	•										
31	5113820	COMB. CHAMBER FRONT PANEL							•	•	•	•	•				
31	5114290	COMB. CHAMBER FRONTAL PANEL	•	•	•	•	•										
32	616170	BI-THERMAL HEAT EXCHANGER+ OR	•	•	•	•	•	•	•	•	•	•	•				
32	5663720	BI-THERMAL HEAT EXCHANGER	•	•	•	•			•	•	•	•	•				
33	5403130	O-RING 22 x 3	•	•	•	•	•	•	•	•	•	•	•				
34	5113650	PRIMARY EXCHANGER FIXING CLIP	•	•	•	•	•	•	•	•	•	•	•				
35	5663880	EXPANSION VESSEL							•	•	•	•	•				
35	5668370	EXPANSION VESSEL 7 L	•	•	•	•	•										
37	5663830	SEALED CHAMBER FRONT PANEL							•	•	•	•	•				
38	5401610	VIEWING WINDOW GASKET							•	•	•	•	•				
39	5203930	VIEWING WINDOW							•	•	•	•	•				
40	5103360	SURROUND - VIEWING WINDOW							•	•	•	•	•				
41	5663710	BURNER ASSEMBLY (13 ELEM.)	•	•	•	•	•	•	•	•	•	•	•				
43	612960	GAS RAMP WITH INJECTORS (N.G.							•	•	•	•	•				
43	615260	GAS RAMP WITH INJECTORS	•	•	•	•	•										
44	5666390	L.P.G. INJECTORS KIT	•	•	•	•	•	•	•	•	•	•	•				
44	5666400	NATURAL GAS INJECTORS KIT							•	•	•	•	•				
44	5669460	NATURAL GAS INJECTORS KIT	•	•	•	•	•										
45	5407940	GASKET-BURNER MANIFOLD	•	•	•	•	•	•	•	•	•	•	•				
46	5211030	FLANGE CONNECTION TO GAS RAMP	•	•	•	•	•	•	•	•	•	•	•				
47	5404760	GASKET-GAS RAMP/SEALED CHAMB.							•	•	•	•	•				
49	5409520	HOSE ADAPTER CAP							•	•	•	•	•				
59	8419050	LEAD - IGNITION ELECTRODE	•	•	•	•	•	•	•	•	•	•	•				

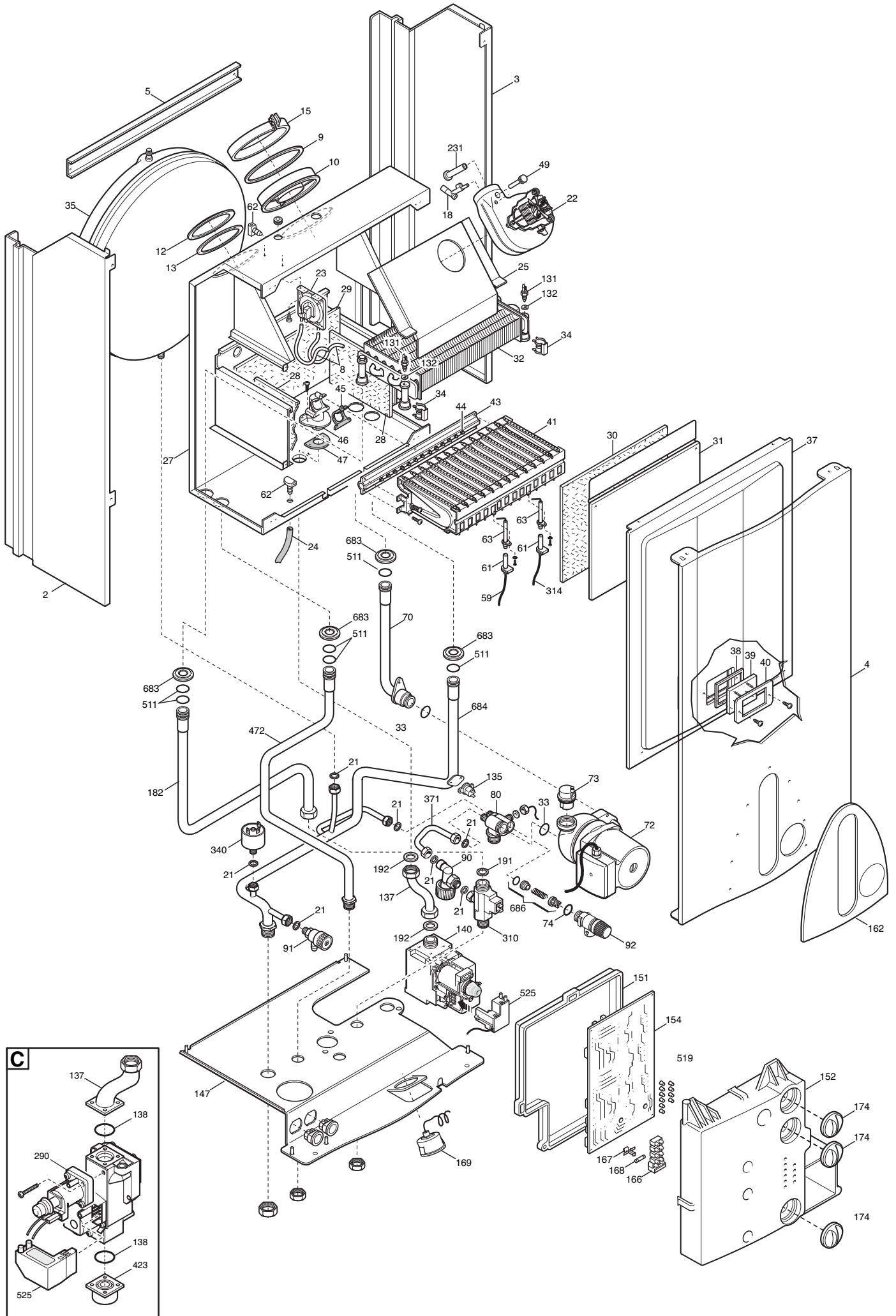
QUASAR

Pos	Code	Description code	BYH432243970	BYH432243971	BYH432243972	BYH432243973	BYH432243974	BYH432243975	BYH436243970	BYH436243971	BYH436243972	BYH436243973	BYH436243974	BYH436243975	To serial number	From serial number	Interchangeable:
61	5407830	INSULATION BOOT - ELECTRODE	•	•	•	•	•	•	•	•	•	•	•	•			
62	5409570	SEALED CHAMBER HOSE ADAPTER							•	•	•	•	•	•			
63	8422570	ELECTRODE - IGNITION	•	•	•	•	•	•	•	•	•	•	•	•			
70	5663730	HYDRAULIC INLET GROUP							•	•	•	•	•	•			
70	5668320	PIPE ASSEMBLY	•	•	•	•	•										
72	5655200	PUMP UP 15.50 AO - GRUNDFOS	•	•	•	•	•	•	•	•	•	•	•	•			
73	607290	AUTOMATIC AIR VENT	•	•	•	•	•	•	•	•	•	•	•	•			
74	5406360	O-RING 14X1,78 EP	•	•	•	•	•	•	•	•	•	•	•	•			
80	5212240	HYDRAULIC INLET GROUP	•	•	•	•	•	•	•	•	•	•	•	•			
90	5663780	FILLING TAP							•	•	•	•	•		B323		
90	5667980	FILLING TAP					•							•			
90	5667980	FILLING TAP	•	•	•	•		•	•	•	•	•	•			B323	NO
91	5652030	DRAINING TAP	•	•	•	•	•	•	•	•	•	•	•	•			
92	9951170	SAFETY VALVE 3 BAR	•	•	•	•	•	•	•	•	•	•	•	•			
131	8434820	TEMPERATURE SENSOR	•	•	•	•	•	•	•	•	•	•	•	•			
132	5402830	WASHER - SENSOR SEALING	•	•	•	•	•	•	•	•	•	•	•	•			
135	9950760	THERMOSTAT - LIMIT	•	•	•	•	•	•	•	•	•	•	•	•			
137	5663690	GAS PIPE							•	•							
137	5668360	GAS PIPE	•														
137	5669650	GAS PIPE HON. MAIN FF							•	•	•	•	•				
137	5670420	GAS PIPE HON. MAIN ATM	•	•	•	•	•										
138	5402010	O RING 22.22x2.62	•	•	•	•	•	•	•	•	•	•	•	•			
140	5658830	GAS VALVE - SIGMA	•	•	•	•	•	•	•	•	•	•	•	•			
140	5665220	GAS VALVE HON.	•	•	•	•	•	•	•	•	•	•	•	•			
147	5668500	CONNECTION TRAVERSE	•	•	•	•	•	•	•	•	•	•	•	•			
151	5409550	ELECTRIC BOX REAR COVER	•	•	•	•	•	•	•	•	•	•	•	•			
152	5665110	PRINTED CONTROL PANEL WESTEN							•	•	•	•	•	•			
152	5669020	PRINTED CONTROL PANEL QUASAR24	•	•	•	•	•										
154	5663840	P.C.B.- SIT							•	•	•	•	•		B323		

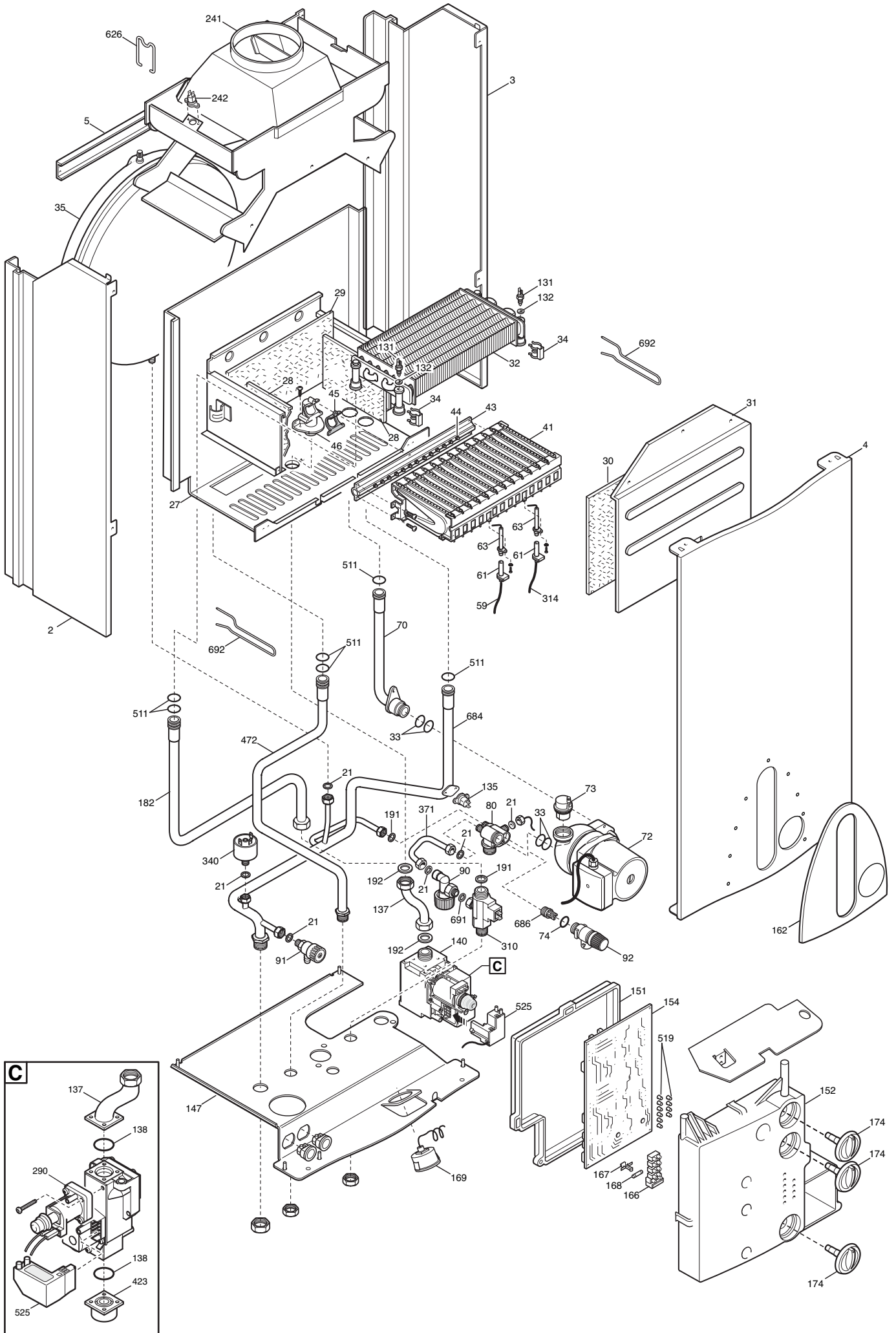


Pos	Code	Description code	BYH432243970	BYH432243971	BYH432243972	BYH432243973	BYH432243974	BYH432243975	BYH436243970	BYH436243971	BYH436243972	BYH436243973	BYH436243974	BYH436243975	To serial number	From serial number	Interchangeable:
511	5404600	O.R. 17,86x2,62	•	•	•	•	•	•	•	•	•	•	•	•			
519	5407780	LENS - NEON	•	•	•	•	•	•	•	•	•	•	•	•			
525	8419060	IGNITION UNIT - NAC	•	•	•	•	•	•	•	•	•	•	•	•			
525	8510910	CABLE-GAS VALVE/IGNITER	•	•	•	•	•	•	•	•	•	•	•	•			
626	5114370	FLUE SAFETY THERMOSTAT CLIP	•	•	•	•	•	•	•	•	•	•	•	•			
683	5408810	GASKET(GAS RAMP/SEALED CHAMBER							•	•	•	•	•	•			
684	5663740	BY-PASS/HETING INLET/EXCHANGER							•	•	•	•	•	•			
684	5668340	BY PASS-HEATING EXCHANGER	•	•	•	•	•	•									
686	5663020	BY-PASS PLUG ASSEMBLY	•	•	•	•	•	•	•	•	•	•	•	•			
691	5410320	GASKET 9X4X3	•	•	•	•	•	•	•	•	•	•	•	•			
692	5114360	PRIMARY EXCHANGER CLIPS	•	•	•	•	•	•									
693	5114350	PRINTED CNTR. PANEL PROTECTION	•	•	•	•	•	•									
999	8414620	POWER CABLE	•	•	•	•	•	•	•	•	•	•	•	•			
999	8419080	CABLE - EARTH	•	•	•	•	•	•	•	•	•	•	•	•			
999	8510340	POWER SUPPLY WIRING							•	•	•	•	•	•			
999	8510350	LOW VOLTAGE COMP.WIRING							•	•	•	•	•	•			
999	8510740	POWER SUPPLY WIRING	•	•	•	•	•	•									
999	8510750	LOW VOLTAGE COMP.WIRING	•	•	•	•	•	•									
999	8510760	POWER SUPPLY WIRING	•	•	•	•	•	•									

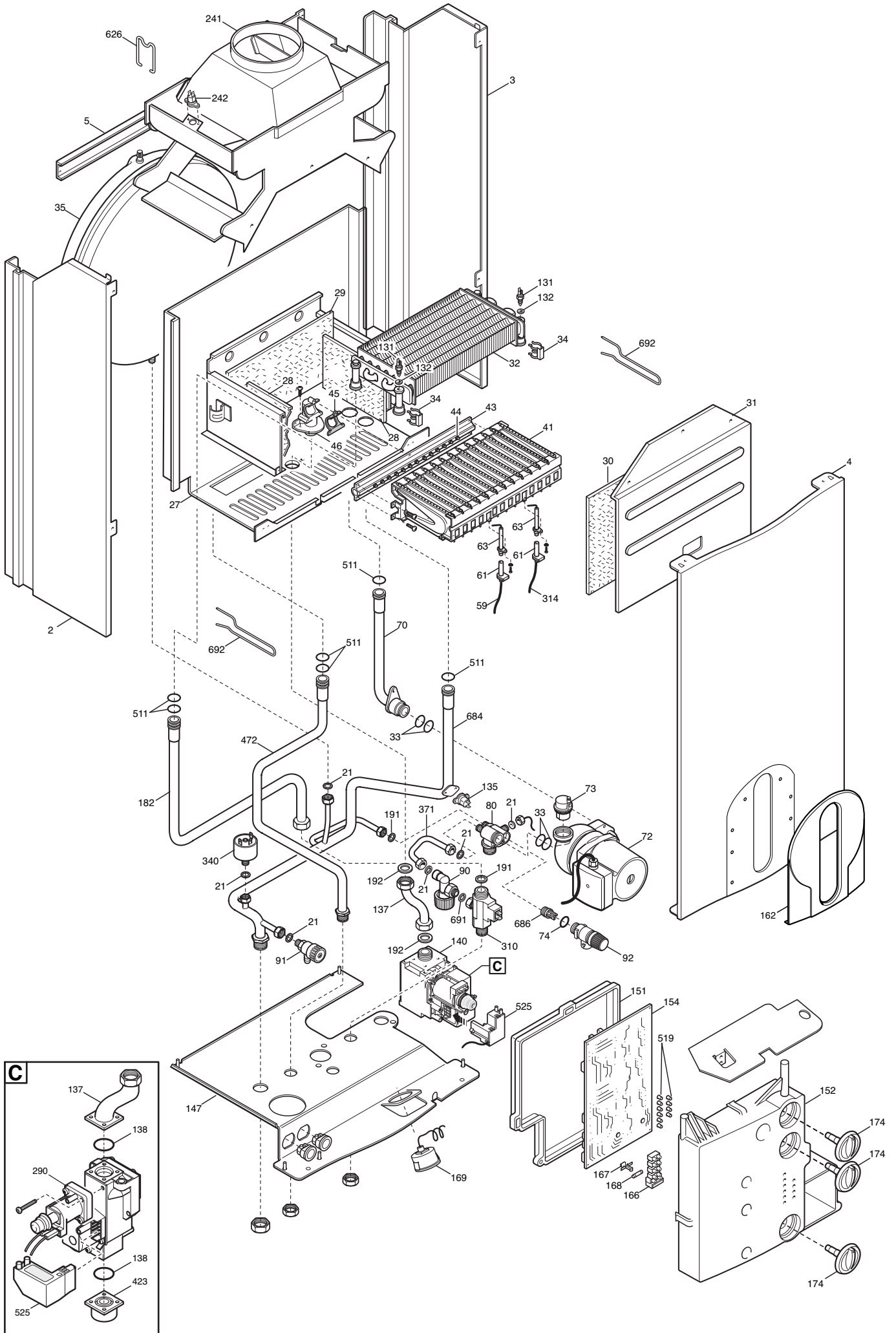
Tab 3



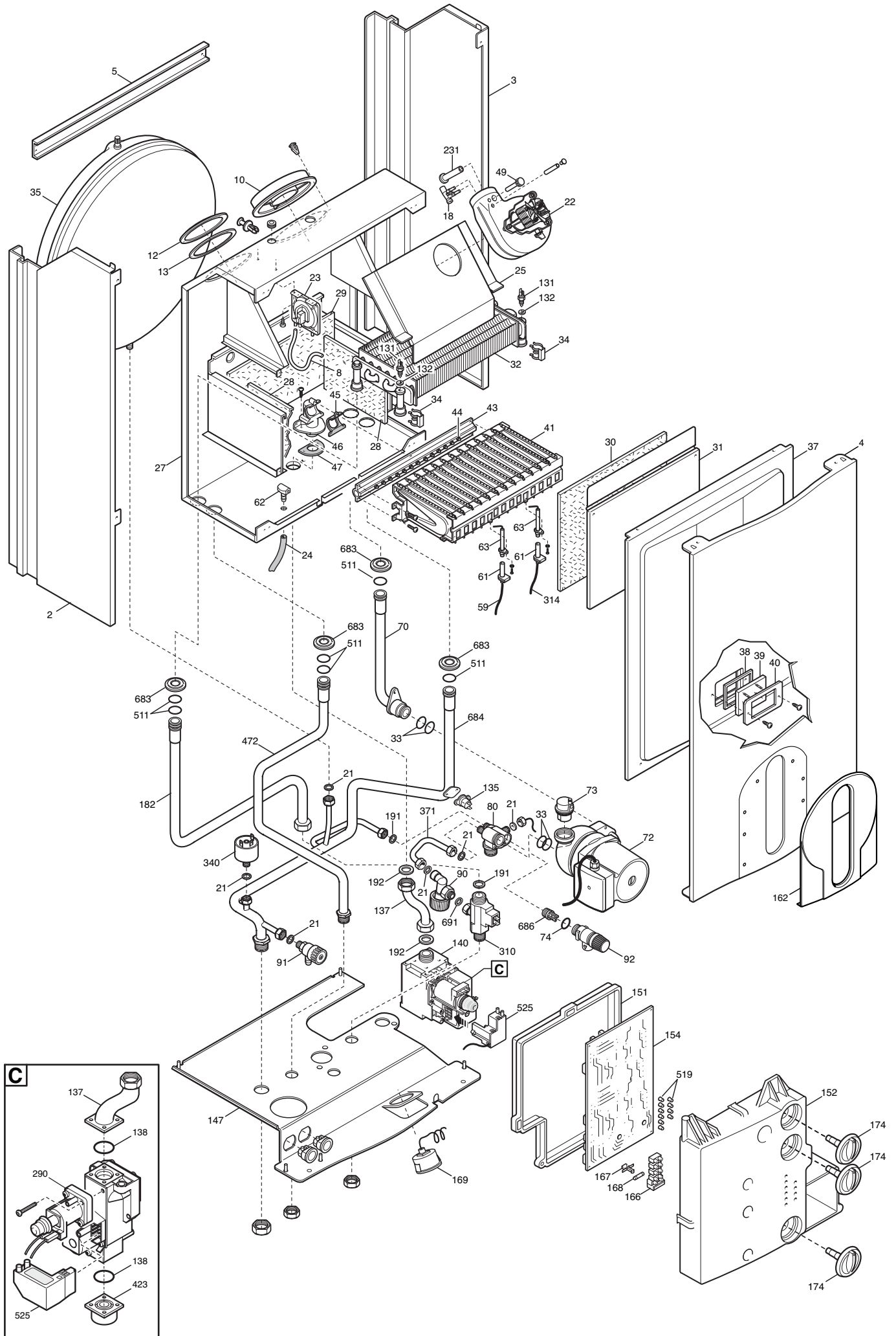
Tab 5



Tab 8



Tab 211



WESTEN

BAXI S.p.A.
Via Trozzetti, 20
36061 BASSANO DEL GRAPPA (VI) ITALY
Tel. +390424517111 Telefax +390424517379
Web site: www.baxi.it e-mail: service@baxi.it