



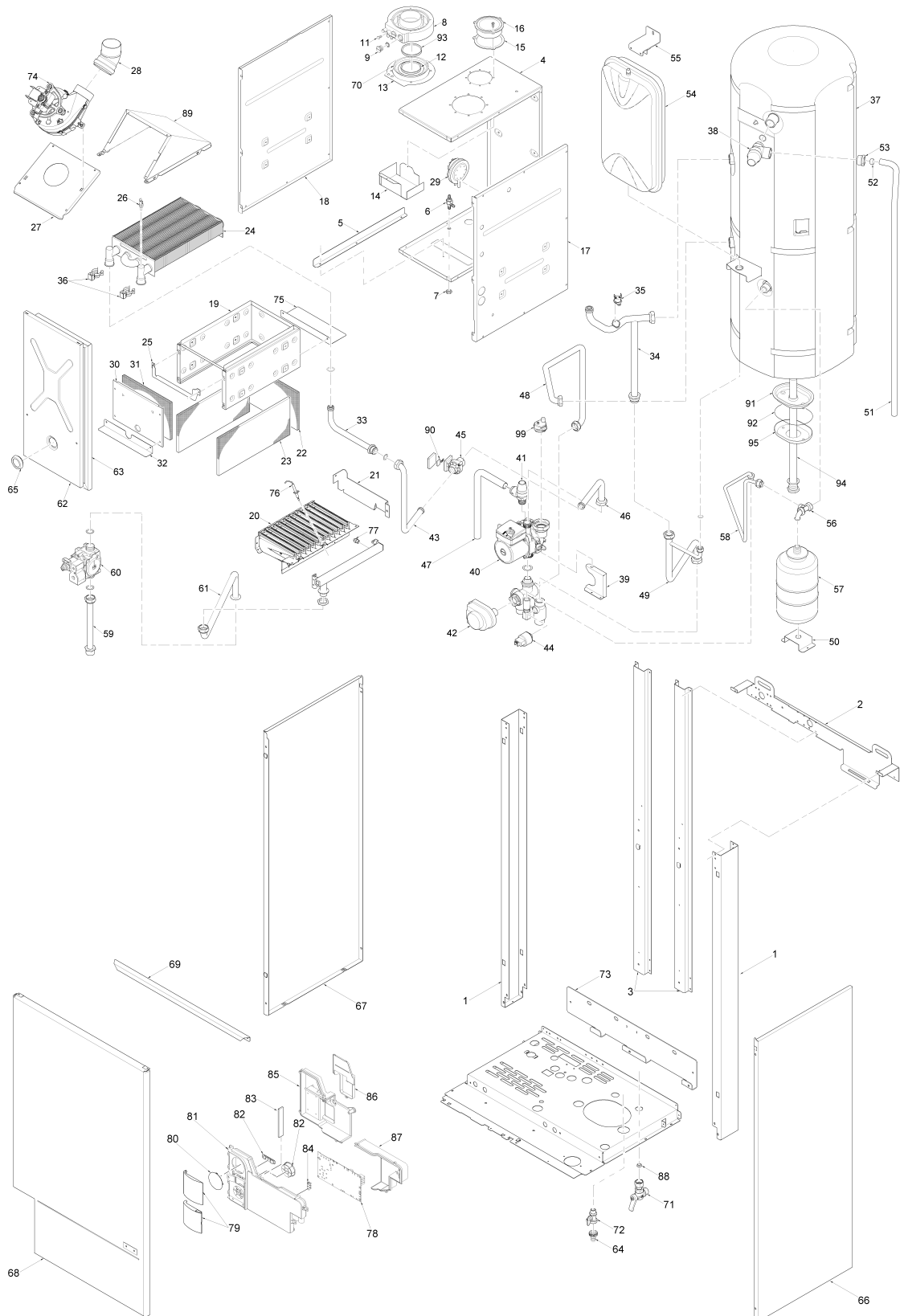
Fonderie Sime S.p.A. - Via Garbo, 27 - 37045 Legnago (VR) - www.sime.it
 Tribunale Verona 13531 - R.E.A. VR 171357 - C.C.P. 19423375 - N° Mecc. VR 014435
 Capitale Sociale Euro 5.521.200 int. versato - Codice Fiscale/Partita IVA n. IT 01275930236

Comfort Ambiente - Via Garbo, 27 - 37045 Legnago (VR)

Tel +39 0442 631111 - Fax Servizio Commerciale: Italia +39 0442 631291 - Estero +39 0442 631293

Fax Servizio Tecnico +39 0442 631292 - Fax Ufficio Acquisti +39 0442 631292 - Fax Amministrazione +39 0442 631336

8106610 CALD.MUR.MET.MUREL.EV 25/55 BF



Posiz.	Codice	Descrizione
001	6138558	Right/left hand side frame part
002	6138711	Frame assembly upper support

003	6256714	Sealed chamber rear support
004	6266042	Sealed chamber rear panel
005	6257521	Combustion chamber lower air de
006	6280500	3-ways junct. with press. test
007	6146303	Brass Nut 1/8"
008	6287900	Air/smoke manifold
009	6147406	Air/smoke manifold plug M14x1.5
011	6242602	Air/smoke manifold screw
012	6248803	Lip seal for Ø 60 pipe
013	6028706	Air/smoke manifold gasket
014	6257512	Air deflector for separate duct
015	6028707	Air intake gasket
016	6288000	Air intake
017	6266132	Sealed chamber right hand side
018	6266142	Sealed chamber left hand side p
019	6213608	Combustion chamber
020	5190700	Main burner assembly
021	6293002	Burner fixing bracket
022	6139727	Combustion chamber rear insulat
023	6139729	Combustion chamber side insulat
024	6174230	Heat exchanger
025	6293003	Exchanger fixing bracket
026	6231351	Plunged sensor
027	6229218	Fan mounting plate
028	6189109	45° M.F. flue elbow dia 60 mm.
029	6225707	Air pressure switch
030	6229008	Combustion chamber front panel
031	6139795	Combustion chamber front insula
032	6257527	Air deflector
033	6265102	Heat exchanger inlet pipe
034	6265105	Heat exchanger outlet pipe
035	6146701	100°C safety stat
036	6226601	Spring for heat exchanger conne
037	5194303	Insulated stainless steel tank
038	6029000	Pressure relief valve 1/2" - 7
039	6073318	Circulating pump fixing bracket
040	6124818	Circulating pump 15-60
041	6040209	Pressure relief valve
042	6087304	Motor for Honeywell diverting v
043	6215640	C.H. return pipe
044	6273603	Water press.transd. HUBA CONTR
045	6149303	Flow water switch
046	6215642	Connection pipe flow water swit
047	6157634	Pressure relief valve drain pip
048	6194806	D.H.W. tank outlet pipe
049	6216235	C.H. flow pipe
050	6073312	Expansion vessel support
051	6157632	Pressure relief valve drain pip
052	6100202	Ogive for pipe Ø 15
053	6168401	Locking nut for pipe Ø 15
054	5183722	Rectang. expansion vessel 10 l.
055	6267109	D.H.W. expans. vessel locking b
056	6227682	Pipe connecting D.H.W. expans.
057	6245102	Sanitary D.H.W. tank - 2.5 L.
058	6199212	Boiler feeding loop
059	6226878	Gas inlet pipe
060	6243827	SIT gas valve type 845 SIGMA
061	6226956	Pipe between gas valve-burner a
062	6304500	Sealed chamber front panel
063	5192207	Gasket for sealed chamber
064	6179200	Holder complete with locking nu
065	6001210	Peephole
066	6242117	Casing right hand side panel
067	6242217	Casing left hand side panel
068	6304232	Casing front panel
069	6072420	Front panel fixing
070	6028624	Air diaphragm Ø 87.5
071	6177514	Ball cock 1/2" M - 1/2" F
072	6179100	Drain cock 3/8"
073	6215211	Hanging bracket
074	6225634	Fan
075	6257529	Lower air deflector
076	6235931	Ignition-ionisation electrode
077	6296100	Main burner nozzle NP 130 natur
077A	6154418	Main burner nozzle diam. 0,79
078	6301407	Main PCB
079	6304890	Flap door assembly

080	6247327	Cap for time programmer	
081	6304700	Control panel	
082	6305120	Kit Rubber button	
083	6305160	Guidelight with led	
084	2211610	Earth faston	
085	6305000	Cover	
086	6305020	Time programmer cover	
087	6305010	connection cover	
088	6281401	Water rate adjuster 12 l/min	
089	5172313	Smoke chamber assembly	
090	6131401	Microswitch for flowmeter	
091	6258311	D.H.W. cylinder flange	FINO MATR.4209300354
092	6052705	Gasket for D.H.W. cylinder flan	FINO MATR.4209300354
093	6248817	Lip seal for Ø 60 pipe	
094	6072708	Magnesium anode + plug 3/4" + O	
095	6258312	D.H.W. cylinder counterflange	FINO MATR.4209300354
099	6013181	Automatic air vent	
700	5197001	Brass hydraulic group	
701	5197200	Complete control panel	
702	6231330	Temperature sensor L=1120	
703	6269813	Ignition cable	
704	6316200	Connector 2 poli	
705	6316263	Connector 4 poli	
706	6316236	9 pole cable connector	
707	6316237	14 pole cable connector	
708	6316238	4 pole cable connector	
709	6316239	5 pole cable connector	
710	6281534	Gaskets kit	
711	5144721	Conversion kit to LPG	
713	6146603	Filling cock 5197001 group	