



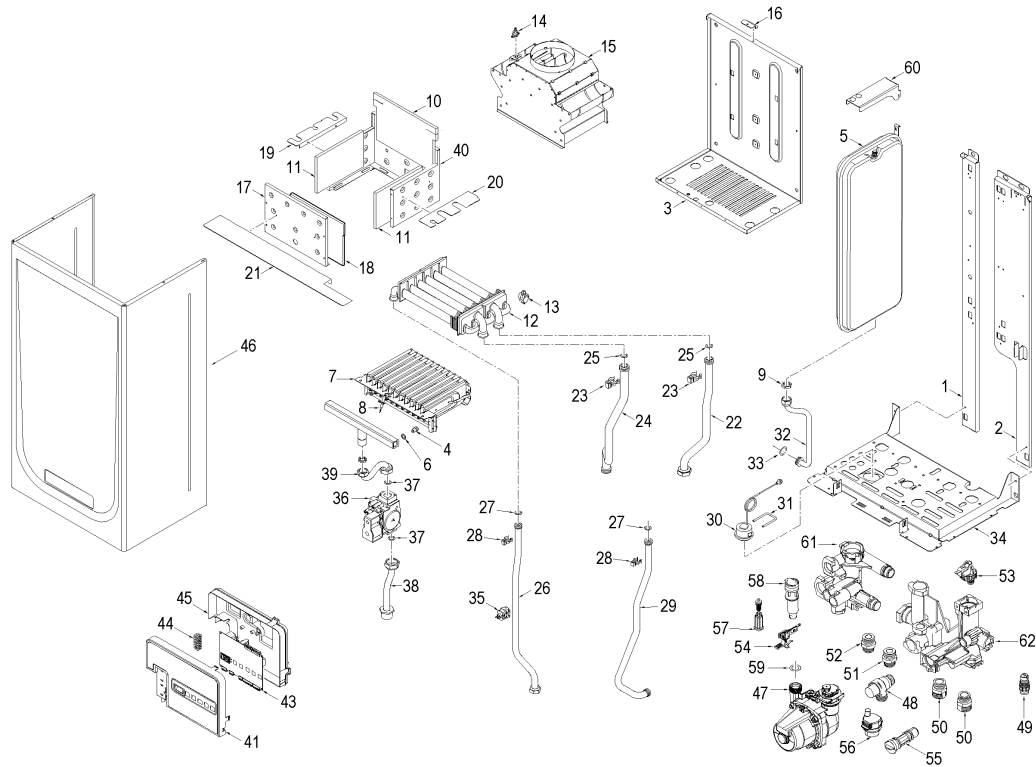
Fonderie Sime S.p.A. - Via Garbo, 27 - 37045 Legnago (VR) - www.sime.it
 Tribunale Verona 13531 - R.E.A. VR 171357 - C.C.P. 19423375 - N° Mecc. VR 014435
 Capitale Sociale Euro 5.521.200 int. versato - Codice Fiscale/Partita IVA n. IT 01275930236

Comfort Ambiente - Via Garbo, 27 - 37045 Legnago (VR)

Tel +39 0442 631111 - Fax Servizio Commerciale: Italia +39 0442 631291 - Estero +39 0442 631293

Fax Servizio Tecnico +39 0442 631292 - Fax Ufficio Acquisti +39 0442 631292 - Fax Amministrazione +39 0442 631336

8107800 CALD.MET. METROPOLIS DGT 25 OF



Posiz.	Codice	Descrizione	
001	6318350	Left hand side frame part	
002	6318300	Right hand side frame part	
003	6317650	Rear panel	
004	6154402	Main burner nozzle NP 130 natur	METANO
005	5183724	Rectang. expansion vessel 8 l.	
005A	5183726	Rectang. expansion vessel 8 l.	DA MATR. 4045301234
006	6022004	Copper washer Ø 6	
007	5198260	Main burner assembly	
008	6235932	Ignition-ionisation electrode	
009	6146330	Nut 1/2" for expansion vessel	
010	6318721	Combustion chamber rear insulat	
011	6318710	Combustion chamber side insulat	
012	6174260	Gas/Water heat exchanger	
013	6231362	NTC sensor	
014	6146712	Smoke switch	
015	5167590	Smoke chamber assembly	
016	6073350	Smoke chamber mounting bracket	
017	6317950	Combustion chamber front panel	
018	6318701	Combustion chamber side insulat	
019	6276620	Smoke chamber L.H.S. closure	
020	6276520	Smoke chamber R.H.S. closure	
021	6276721	Smoke chamber front closure	
022	6264842	C.H. return pipe	
023	6226601	Spring for heat exchanger conne	
024	6264774	C.H. flow pipe	
025	6226412	O-ring 3068	
026	6227017	D.H.W. outlet pipe	
027	6226444	O-Ring Ø 13,64 x 2,62	
028	6226617	Spring for heat exchanger conne	
029	6227116	D.H.W. inlet pipe	
030	6146111	Hydrometer	
031	6226628	Hydrometer Fixing spring	
032	6017311	Flexible pipe L=250	
032A	6227692	Pipe connecting expans. vessel	DA MATR. 4045301234

033	6226464	O-ring 115 diam. 11,91x2,62	
034	6318010	Frame assembly lower side	
035	6231357	D.H.W. temperature sensor	
036	6243833	Gas valve	
037	2030228	Gasket Ø 17x24x2	
038	6226884	Gas inlet pipe	
039	6226958	Pipe conn. gas valve to burner	
040	6318550	Combustion Chamber front panel	
041	6304751	Control panel	
043	6301420	Main P.C.B.	
044	2211010	Terminal strip	
045	6305050	Control panel cover	
046	6317831	Casing	
047	6272309	Circulating pump	
048	6040211	Pressure relief valve 3 bar	
049	6319603	Discharger cock	
050	6120533	C.H Nipple	
051	6120532	D.H.W. Nipple	
052	6120534	D.H.W. Nipple exit	
053	6037504	Water pressure switch	
054	6319601	Sensor hall complete	
055	6319640	By-pass	FINO MATR.4037300508
055A	6319641	By-pass 2 (new)	DA MATR. 4037300509
056	6013182	Automatic air vent	
057	6319634	Filling cock	
058	6319633	Flowmeter without reg. of capac	
059	6226457	O-ring 12bis diam. 16x1,90	
060	6267112	D.H.W. expans. vessel locking b	FINO MATR.4045301233
061	6319697	D.H.W. Technyl manifold group	
062	6319696	C.H. Technyl manifold group	
701	5197970	Complete control panel	
703	6316255	6 pole Stocko connector CN6	
704	6316253	9 pole Stocko connector	
705	6316256	14 pole Stocko connectorCN4	
707	6319699	Split pin kit for hydraulic gro	
708	6319698	O-ring kit for hydraulic group	
709	6281534	Gaskets kit	
713	5144722	L.P.G. conversion kit	
714	6281506	O-ring kit for hydraulic group	
715	6319695	Murelle-Format-.....o-ring kit	
716	5198390	Technyl hydraulic group	
717	8076110	Expas.major vassel ZILMET	FINO MATR.4045301233
719	6211792	Hydraul. group Bitron caps kit	