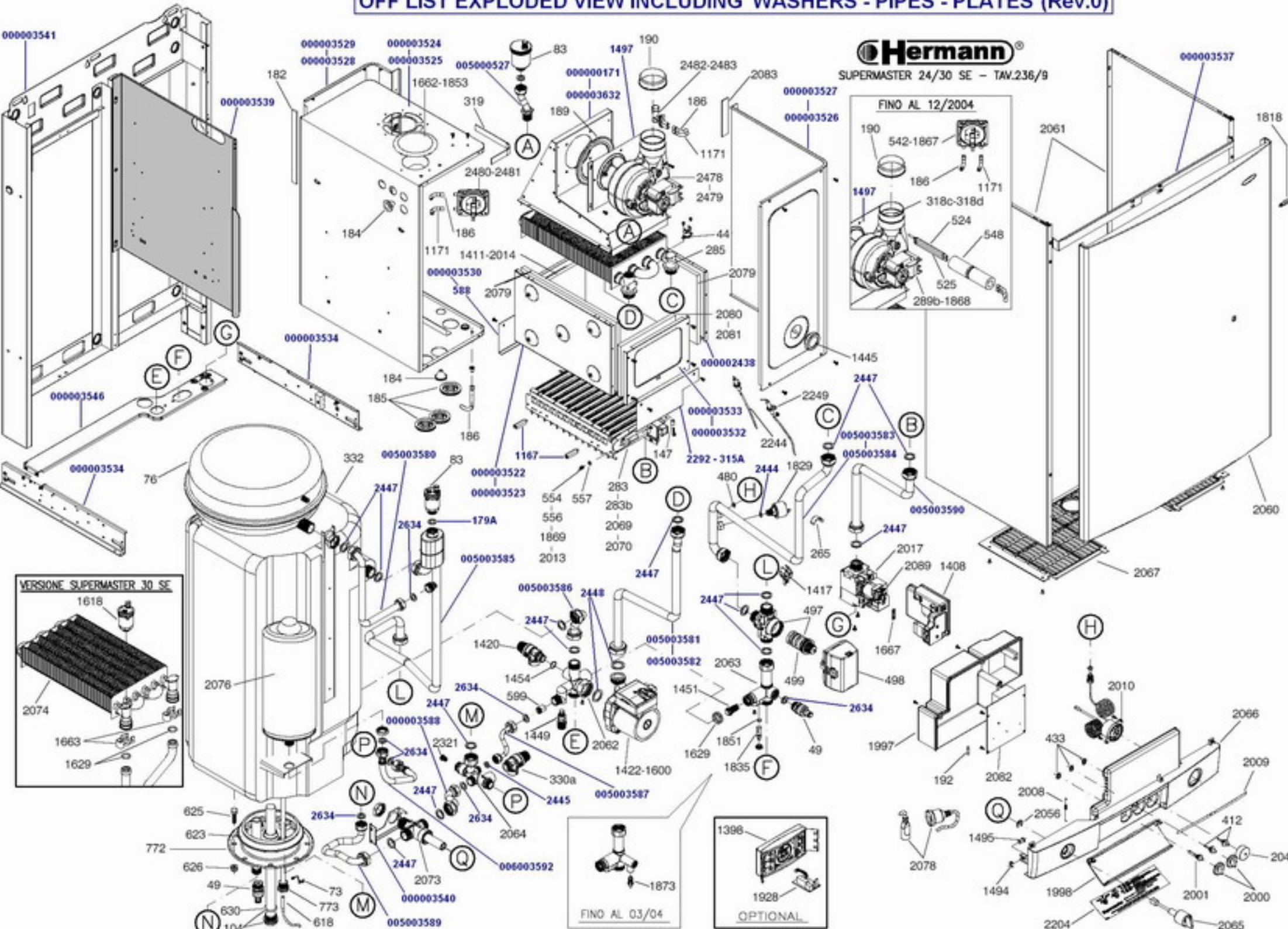
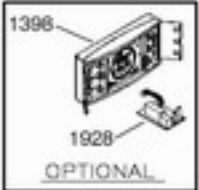
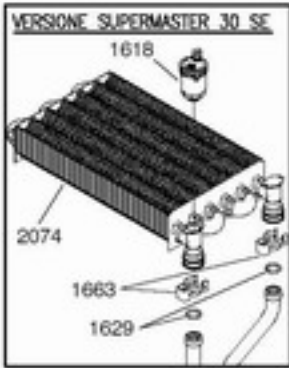
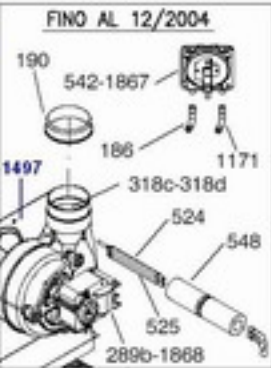
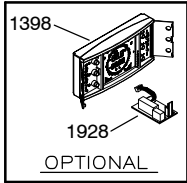
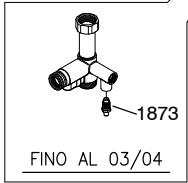
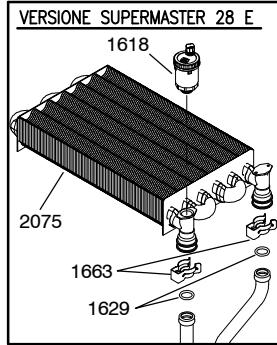
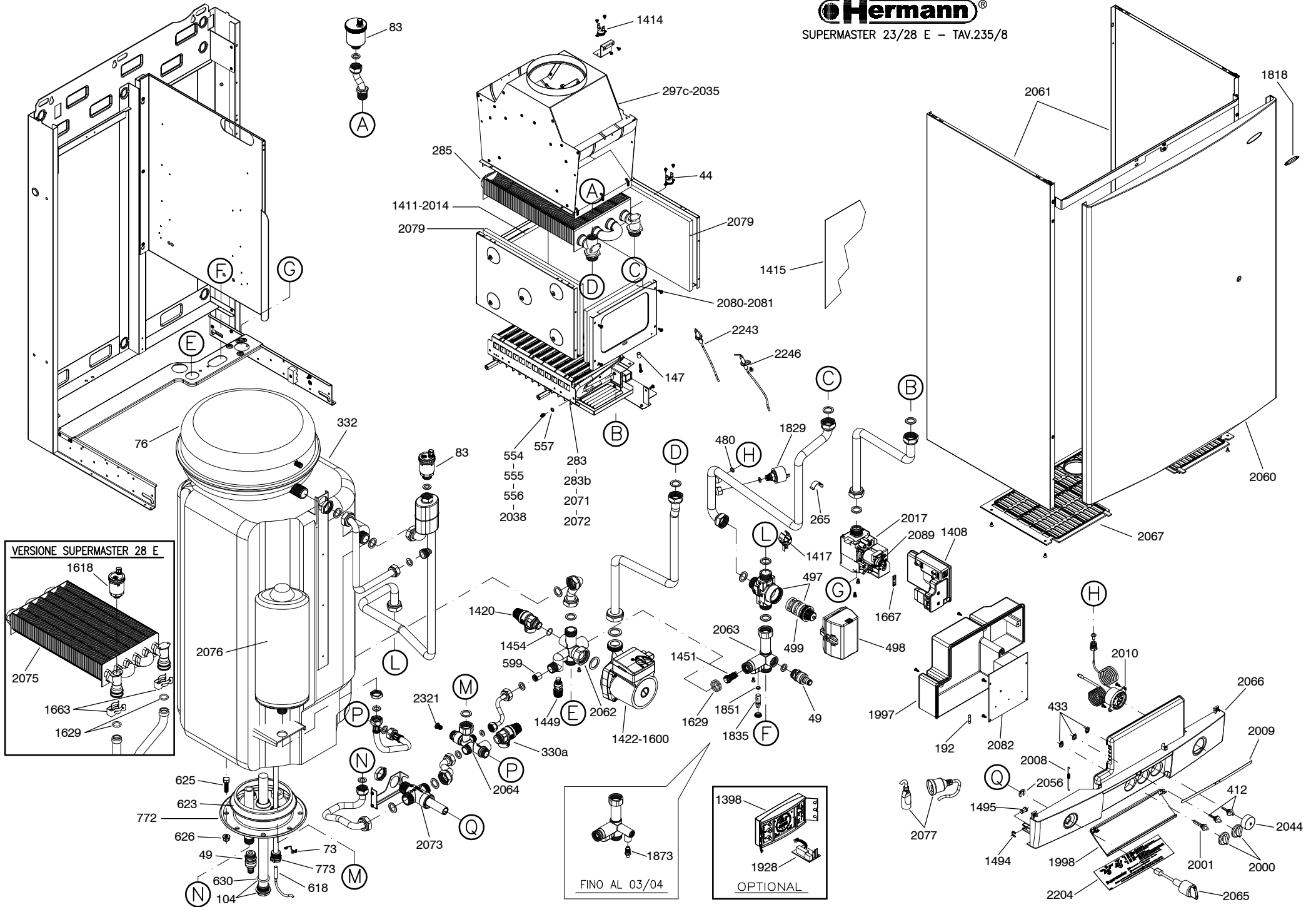


OFF LIST EXPLODED VIEW INCLUDING WASHERS - PIPES - PLATES (Rev.0)

Hermann[®]

SUPERMASTER 24/30 SE - TAV.236/9





N	Code	DESCRIPTION			
44	048000764	OVERHEAT THERMOSTAT 105?/85? 220 V.			
49	013000384	DRAIN VALVE ? ?"			
83	021000363	AUTOMATIC AIR VENT ? ?"			
177	403000003	WATER VALVE MICROSWITCH			
182	180001504	SEALING STRIP 15 x 4			
183	032000130	SILICON GROMMET FOR ELECTRODE CABLE			
184	032000116	# CONICAL SILICON GROMMET			
185	032000128	# SILICON GROMMET FOR TUBE ? 18			
186	164070040	# WHITE SILICON TUBE 4 x 7			
189	032000117	# SILICON GASKET FOR FAN INLET			
190	032000114	SILICON GASKET FOR FAN OUTLET			
192	057000687	FUSE (2A)			
265	038000368	PROBE FIXING SPRING			
269	040000342	ALUMINIUM PALLET			
289B	035000999	FAN			
303	005000527	# PIPE FOR AUTOMATIC AIR VENT 23-24-28-29 - 32 kW			
314	000000171	# FLUE COLLECTOR SE 23-24 Kw -EURA			
314A	000000163	FLUE COLLECTOR SE 28-29 Kw EURA			
315	000000226	RIGHT DEFLECTOR SE			
315A	000000227	LEFT DEFLECTOR SE			
318C	010001466	FLUE SENSOR 28 KW			
318D	011001865	FLUE SENSOR 23 KW			
319	180001503	SEALING STRIP 15 x 3			
379	032000129	JOINT NEOPRENE 100 PCS			
412	040001199	# POTENTIOMETER FITTING			
433	040001200	# SPRING CLIP FOR POTENTIOMETER FITTING			
480	135071110	WASHER 7 x 11 x 1			
497	021001424	BODY OF VALVE 3 WAY ? 3/4 " M			
498	021001430	3-WAY VALVE ACTUATOR			
499	021001433	3-WAY VALVE PISTON			
524	011001406	AIR PRESSURE SENSING TUBE (DYNAMIC)			
525	011001408	AIR PRESSURE SENSING TUBE (STATIC)			
529	403000008	SPRING CLIP			
542	049001529	AIR PRESSURE SWITCH			
548	166161070	PIPE FOR THERMIC INSULATING ? 15			
554	144000120	NAT.GAS (G20) INJECTOR			
555	144000125	NAT.GAS (G25) INJECTOR FOR MAIN BURNER			
556	144000075	LPG INJECTOR G30/G31			
557	129060910	COPPER WASHER 6 x 9 x 1			
565	052001678	IGNITION UNIT			
582	057001889	MODULATION COIL			
593	000001553	FAN WASHER			
684	048001745	PRESSURE GAUGE			
1171	164071040	RED SILICON TUBE 4 x 7			
1336	013002188	WATER COCK 1/2" M/F			
1337	013002189	HEATING/FLOW RETURN COCK 3/4" M/F			
1398	047002424	REMOTE CONTROL			
1405	403000011	REPAIR KIT FOR WATER VALVE			
1407	040002452	COVER MICRA			
1408	052002490	IGNITION UNIT			
1410	055002706	ELECTRODE			
1411	060002500	SIDE CERAMIC PANEL 197x142x10			

1412	060002499	FRONT CERAMIC PANEL 288x192x10 23 KW			
1413	015002477	PRIMARY HEAT EXCHANGER 23 KW			
1417	045002485	HEATING/D.H.W. NTC SENSOR			
1420	155600001	SAFETY VALVE 1/2" WITH O-RING 3 Bar			
1421	048002353	PRESSURE GAUGE ? 43 RAL 9002			
1422	149100103	PUMP 5 m. 23 kW			
1423	021002478	3-WAY VALVE			
1424	010002458	3-WAY VALVE BLOCK			
1425	015002479	DOMESTIC HEAT EXCHANGER 12 PLATES 23 kW			
1426	004002563	EXPANSION VESSEL 6 l. 23 kW			
1427	045002503	SUMMER / WINTER SWITCH			
1428	052002484	MAIN P.C.B.			
1431	040002454	KNOB			
1433	050002487	WIRING LOOM SE			
1437	038002380	THERMOSTAT CLIP			
1442	140003043	O-RING ?11x2,62			
1443	032002498	SILICON GROMMET FOR TUBE ? 14			
1445	032002497	SILICON SEAL WITH GLASS ? 35			
1450	011002579	DRAIN VALVE			
1451	021002580	BY-PASS			
1454	140002056	O-RING SAFETY VALVE 3 BAR			
1474	040002719	FASCIA			
1477	033002721	COLD WATER INLET FILTER			
1485	042002712	Not available			
1486	040002727	SCREEN PRINTED COVER			
1487	000002516	OUTER CASE 23 kW			
1491	040002443	WHITE PLASTIC GRID 23 kW			
1494	011002338	PIVOT			
1495	142010709	O-RING			
1496	000002440	SEALED CHAMBER COVER 23 KW EUROMINI			
1497	000002446	FAN MOUNTING PLATE EUROMINI			
1498	010002728	PUMP BLOCK			
1499	020002482	BURNER G20 23 KW			
1597	015002890	PRIMARY HEAT EXCHANGER 28 KW			
1598	060002907	FRONT CERAMIC PANEL 28 - 32 KW			
1599	015002463	DOMESTIC EXCHANGER 14 PLATES 28 kW			
1600	149100104	PUMP 6 m. 28 kW			
1602	050002915	TIMECLOCK WIRING			
1603	040002914	PRESSURE GAUGE FIXING PLATE			
1604	040002918	CONTROL PANEL			
1605	040002919	CONTROL PANEL COVER			
1606	047002909	DAILY TIMECLOCK WITHOUT HANDS			
1607	005002722	GAS/COLD WATER MAINS			
1608	005002723	HEATING MAINS			
1609	005002724	HOT WATER MAIN			
1610	005002725	SAFETY VALVE DISCHARGE CONNECTION			
1611	013002462	GAS COCK 1/2" x 3/4"			
1616	035002931	FAN			
1617	060002935	FRONT / BHIND COVER CERAMIC FIBRE			
1618	021002950	AIR VENT			
1619	015002933	HEAT EXCHANGER 23 kW			
1620	045002949	NTC SENSOR			
1623	040002946	FLOAT FLOWSTAT			

1624	057002957	MICROSWITCH			
1625	049002932	AIR PRESSURE SWITCH			
1626	000002960	STEEL FLUE SENSOR			
1627	040002961	PLASTIC FLUE SENSOR			
1629	141017828	O-RING			
1653	005002468	DOMESTIC EXCHANGER/PUMP PIPE			
1656	000002438	COMBUSTION CHAMBER DOOR SMC			
1657	000002439	COMBUSTION CHAMBER DOOR SMC			
1662	032002979	RUBBER COVER ? 75 FOR FLUE HOLE			
1663	038002959	CLIP			
1664	152102420	TEFLON WASHER			
1665	000002903	SEALED CASING COVER 28 - 32 KW - EURA			
1666	020002885	BURNER 28 KW			
1667	032002994	IP44 WASHER FOR IGNITION UNIT			
1676	000002904	OUTER CASE 28 KW			
1677	040002905	PLASTIC GRILLE 28 KW			
1680	000002901	COMBUSTION CHAMBER DOOR MICRA 28 kW- Eura 28 - 32 KW			
1681	000002902	SEALED CHAMBER MICRA 28 kW			
1682	005002906	EXPANSION VESSEL PIPE 28 kW			
1816	000003075	FRONT COVER			
1817	000003076	SIDE COVER			
1818	042003128	BADGE			
1820	022003095	GAS VALVE			
1822	010003085	DOMESTIC BLOCK			
1823	011003164	CAP			
1824	021003093	MIXING VALVE			
1825	021003174	BODY OF MIXING VALVE			
1826	021003175	ENGINE OF MIXING VALVE			
1827	010003083	HEATING BLOCK			
1828	015003094	DOMESTIC EXCHANGER			
1829	049003163	LOSS OF WATER SWITCH			
1830	045003129	DOMESTIC NTC SENSOR			
1831	045003135	HEATING NTC SENSOR			
1834	004003092	EXPANSION VESSEL LT 8			
1835	040001950	PIVOT BY PASS			
1837	040003098	CONTROL PANEL			
1838	040003099	CONTROL PANEL COVER			
1839	040003100	COVER			
1840	040003101	COVER			
1841	038003114	COVER COIL			
1842	052003113	MAIN PCB			
1843	052003112	DISPLAY			
1844	032003103	KEY BOARD			
1845	032003097	BUTTON			
1846	042003096	STICKER LED			
1851	141006020	O-RING PIVOT			
1853	032002980	RUBBER COVER ? 60,5			
1855	144000077	INJECTOR ? 0,77			
1859	005003188	GAS PIPE			
1864	020003145	BURNER 32			
1865	015003150	PRIMARY HEAT EXCHANGER 32 KW			
1866	149100105	PUMP 7,5 M			
1867	049003148	AIR PRESSURE SWITCH EURA 32			

1868	035003149	FAN 32 kW			
1869	144000130	NAT GAS INJECTOR 1,3 SMC 30 SE			
1879	057003232	MICROSWITCH			
1889	000002924	COMBUSTION CHAMBER DOOR 23 EUROMINI			
1891	000002927	FAN COLLECTOR EUROMINI			
1900	021003239	BY-PASS			
1901	005002737	VALVE CONNECTION PIPE			
1902	005002738	PRIMARY EXCHANGER/3 WAY PIPE			
1903	005002739	PUMP/PRIMARY EXCHANGER CONNECTION PIPE			
1904	005002740	DOMESTIC EXCHANGER CONNECTION /PUMPE PIPE			
1905	005002741	EXPANSION VESSEL PIPE 23 KW			
1906	005002742	AIR VENT PIPE			
1928	052003235	PCB REMOTE CONTROL			
1933	021003312	AUTOMATIC AIR VENT 1/4"			
1950	005003117	BLOCK / MINI TANK PIPE EURA			
1951	005003118	MIXER / MINI TANK PIPE EURA			
1952	005003119	EXCHANGER / PUMP PIPE EURA			
1953	005003120	EXCHANGER / 3 WAYS PIPE EURA			
1954	005003121	MINI TANK / 3 WAYS VALVE PIPE EURA			
1955	005003122	EXPANSION VESSEL PIPE EURA			
1957	005003124	HEATING BLOCK / MINI TANK PIPE			
1975	A00540017	TUBE WITH MAGNET			
1981	050003342	FLAME DETECTOR CABLE			
1982	050003343	IGNITION CABLE			
1993	050003341	PROBE CABLE			
1994	000003359	SIDE CASE			
1995	000003360	FRONT CASE			
1997	040003381	CONTROL PANEL CLOSING			
1998	040003382	COVER			
1999	040003383	PLASTIC GRID			
2000	040003384	KNOB			
2001	040003386	FITTING			
2002	015003387	EXCHANGER 30 Kw			
2003	015003389	DOMESTIC EXCHANGER 16 PLATES			
2004	004003396	EXPANSION VESSEL 8 l 23 Kw			
2005	052003398	PCB			
2008	038003403	COIL COVER			
2009	042003404	BADGE LED			
2010	047003405	PRESSURE/ TEMPERATURE GAUGE			
2011	020003408	BURNER 30			
2013	144000078	INJECTOR 0,78			
2014	060003410	SIDE CERAMIC PANEL 197X114X10			
2015	060003424	FRONT CERAMIC 288X192X10			
2016	020002955	BURNER HABITAT			
2044	040003478	KNOP TUP			
2047	149100106	PUMP M 7			
2082	052003579	PCB SMS			
2089	401000016	MODULATING COIL for GAS VALVE 845			
2098	032003704	GROMMET FOR CABLE D 14			
2113	032003742	SILICON GASKET D 60			
2114	032003664	WASHER FLANGE IN / OUT FLUE			
2115	040003674	FLANGE IN / OUT FLUE			
2116	032003662	WASHER TUBE			

2117	011003741	SREW INSPECTION			
2118	035003676	FAN			
2119	032003660	WASHER FAN			
2120	000003668	PLATE FOR FAN			
2121	032003663	WASHER FAN			
2122	032003661	WASHER ELECTRODE			
2123	055003653	ELECTRODE IONISATION			
2124	055003654	ELECTRODE SPARK			
2125	038003684	SPRING INJECTOR			
2126	038003683	SPRING INJECTOR			
2127	011003677	INJECTOR NATURAL GAS			
2129	052003667	IGNITION UNIT			
2130	065003665	VENTURI SIT			
2132	052003682	PCB			
2134	040003679	CONDENSE SYPHON			
2135	020003776	COVER OF THE BURNER			
2136	032003814	ORING			
2137	032003813	GLASS WASHER			
2138	060003777	INSULANT BURNER			
2139	032003778	WASHER UNDER THE BURNER			
2140	020003779	BURNER FURIGAS			
2141	020003780	BURNER BODY			
2142	060003781	INSULANT DEFLECTOR			
2143	032003782	WASHER FOR FLUE			
2144	000003783	INOX HOSE FLUE			
2158	042003841	BADGE CONDENSING			
2166	052003784	PCB SHB			
2182	040003930	CONTROL PANEL SMC			
2185	048003870	PRESSURE GAUGE			
2188	050003931	WIRING LOOM SMC			
2189	042003933	USER INSTRUCTION LABEL SMC			
2190	013003939	DHW TAP			
2191	013003940	DHW TAP			
2192	013003941	GAS TAP			
2197	013003946	FILLING GROUP			
2205	005003942	DWH INLET PIPE			
2206	005003943	HEATING PIPE			
2207	005003944	DHW PIPE			
2208	005003945	SAFETY VALVE PIPE			
2209	005003392	3 WAYS PIPE SMC 23-24			
2210	005003393	PUMP PIPE SMC 23-24			
2211	005003390	EXPANSION VESSEL PIPE SMC			
2212	005003394	3 WAYS PIPE SMC 28			
2213	005003395	PIMP PIPE SMC 28			
2214	005003391	BUERNE/VALVE GAS PIPE SMC			
2228	010003990	HEATING GROUP EM			
2229	010003992	DHW GROUP EM			
2230	040003993	CONTROL PANEL EM			
2231	050003994	WIRING LOOM EM			
2232	042003996	Not available			
2233	005003789	HEATING PIPE SHB			
2234	005003790	HEATING RETURN PIPE SHB			
2235	005003791	DHW INLET PIPE SHB			

2236	005003792	DHW OUTLET PIPE			
2237	005003788	VALVE GAS/BURNER PIPE SHB			
2241	055004009	IGNITION ELECTRODE L 300			
2242	055004010	IGNITION ELECTRODE L 220			
2243	055004011	IGNITION ELECTRODE L 310			
2245	055004013	DETECTION ELECTRODE L 220			
2246	055004014	DETECTION ELECTRODE L 220			
2247	055004015	DETECTION ELECTRODE L360			
2253	040004021	PLASTIC GRID EU			
2256	050004023	WIRING LOOM EU SE			
2258	042004026	COVER STICKER EU			
2259	005004027	DHW and GAS INLET PIPE EURA			
2260	005004028	HEATING PIPE EU			
2261	005004029	DHW PIPE EU			
2262	005004030	SAFETY VALVE PIPE EU			
2272	022004046	GAS VALVE 845 160 Ma x UK - IKON - EUROMINI			
2273	022004047	GAS VALVE 848 UK			
2274	022004048	GAS VALVE SIGMA 845 310 Ma x UK - SMC			
2289	000003082	COVER BRACKET EURA SE			
2290	000003361	COVER BRACKET SMC 24 SE			
2291	000003368	DEFLECTOR PLATE RH SMC 30			
2292	000003369	DEFLECTOR PLATE LH SMC 30			
2293	000003370	FLUE COLLECTOR SMC 30			
2294	000003376	SEALED CASING COVER			
2295	000003363	COVER BRACKET SMC 30 SE			
2310	022003894	GAS VALVE CVI MODUPLUS			
2321	033004118	PLASTIC FILTER			
2346	040004153	CONTROL PANEL SMS R IRL			
2347	050004154	WIRING LOOM SMC R IRL			
2348	042004158	INSTRUCTIONS COVER SMC R IRL			
2349	005003483	EXCHANGE/GROUP HEATING PIPE			
2470	050004334	WIRING LOOM EURA COND			
2471	005003658	RETURN PIPE EURA COND			
2472	005003657	FLOW PIPE EURA COND			
2473	005003655	DHW TANK/3 WAY VALVE PIPE			
2474	005003656	CH BLOCK/DHW EXCHANGER PIPE			
2475	005003675	CONDENSATION DRAINING COPPER PIPE			
2476	005003659	GAS PIPE EURA COND			
2477	021004338	AUTOMATIC AIR VENT 1/4'			
2478	035004339	FAN 24 KW WITH VENTURI			
2479	035004340	FAN 30 KW WITH VENTURI			
2480	049004343	AIR PRESSOSTAT 24 KW			
2481	049004344	AIR PRESSOSTAT 30 KW			
2482	040004341	VENTURI PROBE FOR FAN 24KW			
2483	040004342	VENTURI PROBE FOR FAN 30KW			
2518	020004450	BURNER 13 RAMPS			
2519	015004451	MAIN EXCHANGER 24 KW			
2520	015004452	FLUE GAS RECUPERATOR 24 KW			
2521	055004453	IGNITION ELECTRODE			
2522	055004454	DETECTION ELECTRODE			
2523	060004456	SIDE CERAMIC PANEL			
2524	060004457	FRONT/REAR CERAMIC PANEL			
2525	040004455	CONDENSATE SYPHONE SMC HE			

2526	040004458	FLANGE IN/OUT FLUE			
2527	040004459	CABLE FERRULE			
2528	035004460	FAN 24 KW			
2529	032004462	RECUPERATOR OUTER WASHER			
2530	032004461	RECUPERATOR INLET WASHER			
2531	048004463	FLUE THERMOSTAT			
2532	050004470	WIRING LOOM			
2533	032004474	FAN WASHER			
2534	042004475	STICKER LED			
2556	032004528	SYPHONE WASHER			
2557	042004473	CONTROL PANEL COVER STICKER			
2558	005004464	GAS VALVE PIPE			
2559	005004465	EXCHANGER OUTLET PIPE			
2560	005004466	EXCHANGER INLET PIPE			
2561	005004467	RECUPERATOR OUTLET PIPE			
2562	005004468	AUTOMATIC AIR VENT PIPE			
2563	005004469	AUTO AIR VENT CONNECTION PIPE			
2564	005004472	CONDENSATE DRAIN PIPE			
2565	000004442	EXCHANGER FLUE COLLECTOR			
2566	000004445	COMBUSTION CHAMBER CLOSURE			
2567	000004446	LEFT AIR DEFLECTOR			
2568	000004447	RIGHT AIR DEFLECTOR			
2569	040004493	DIAPHRAGM			
2589	005004613	EXPANSION VESSEL PIPE SMC			
2596	032004619	NTC PROBE WASHER			
2641	015004734	FLUE GAS RECUPERATOR 30 KW			
2642	000004730	FLUE GAS HOOD 30 KW			
2643	020004732	GAS BURNER 30 KW			
2644	015004733	MAIN EXCHANGER 30 KW			
2645	005004735	RECUPERATOR OUTLET PIPE 30 KW			
2646	005004736	EXCHANGER OUTLET PIPE 30 KW			
2647	005004737	EXCHANGER INLET PIPE 30 KW			
2648	000004731	FRONT DEFLECTOR			
2651	048004739	RETURN MANUAL RESET THERMOSTAT			
2809	164100058	WHITE SILICON TUBE 5 x 8			
2810	164101058	RED SILICON TUBE 5 x 8			