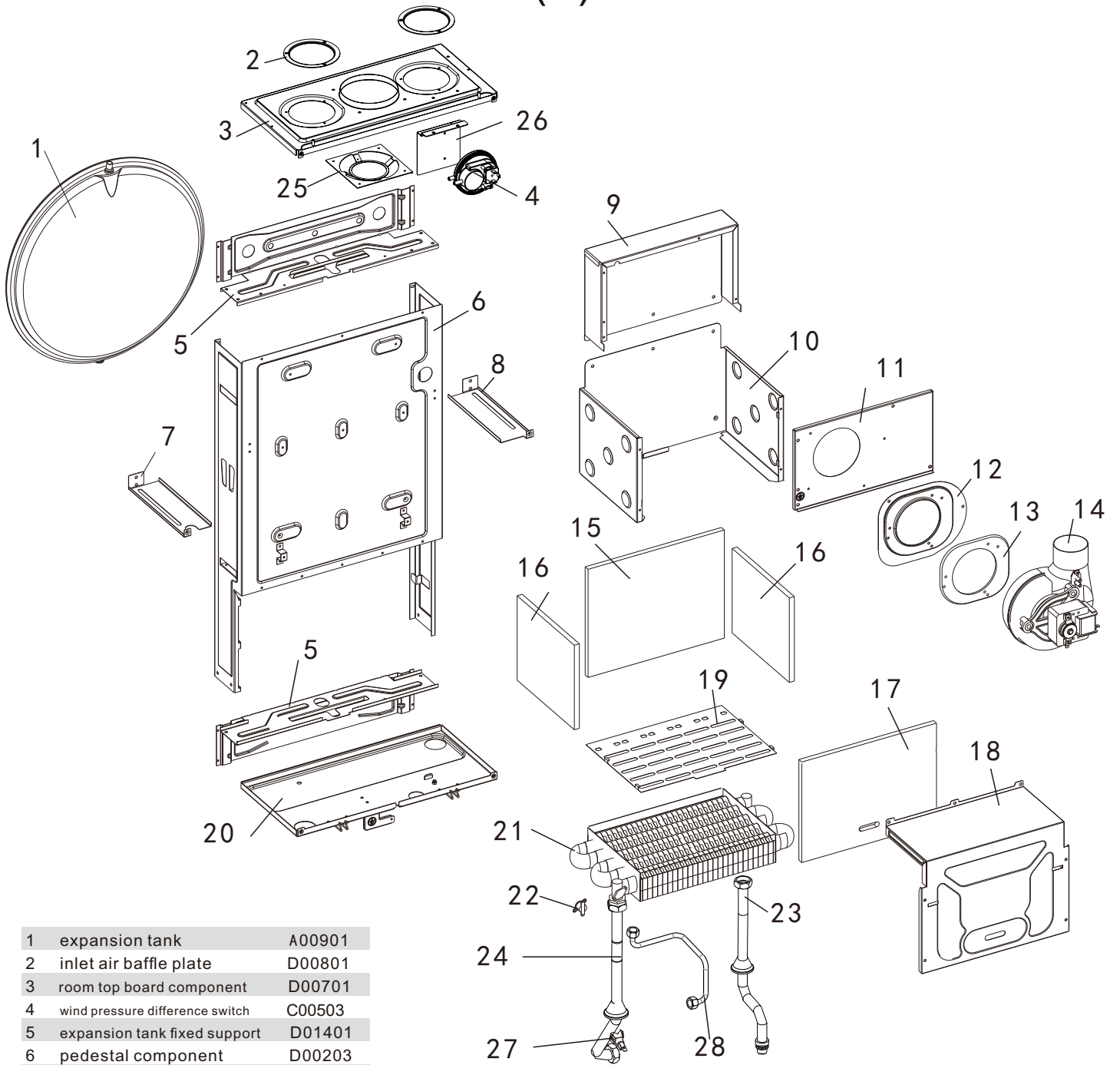
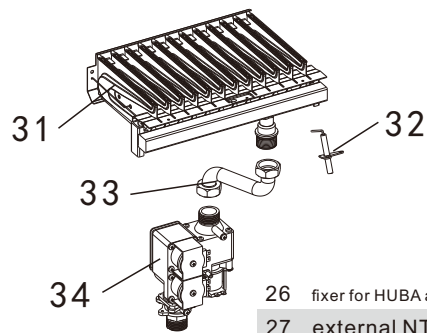
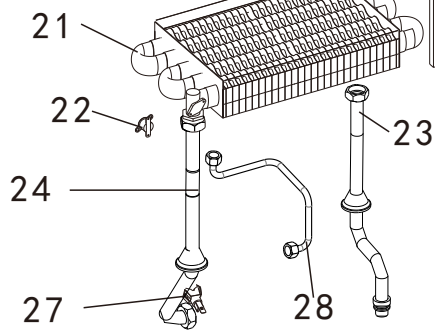


# L1P15-F21S(T) 1/2



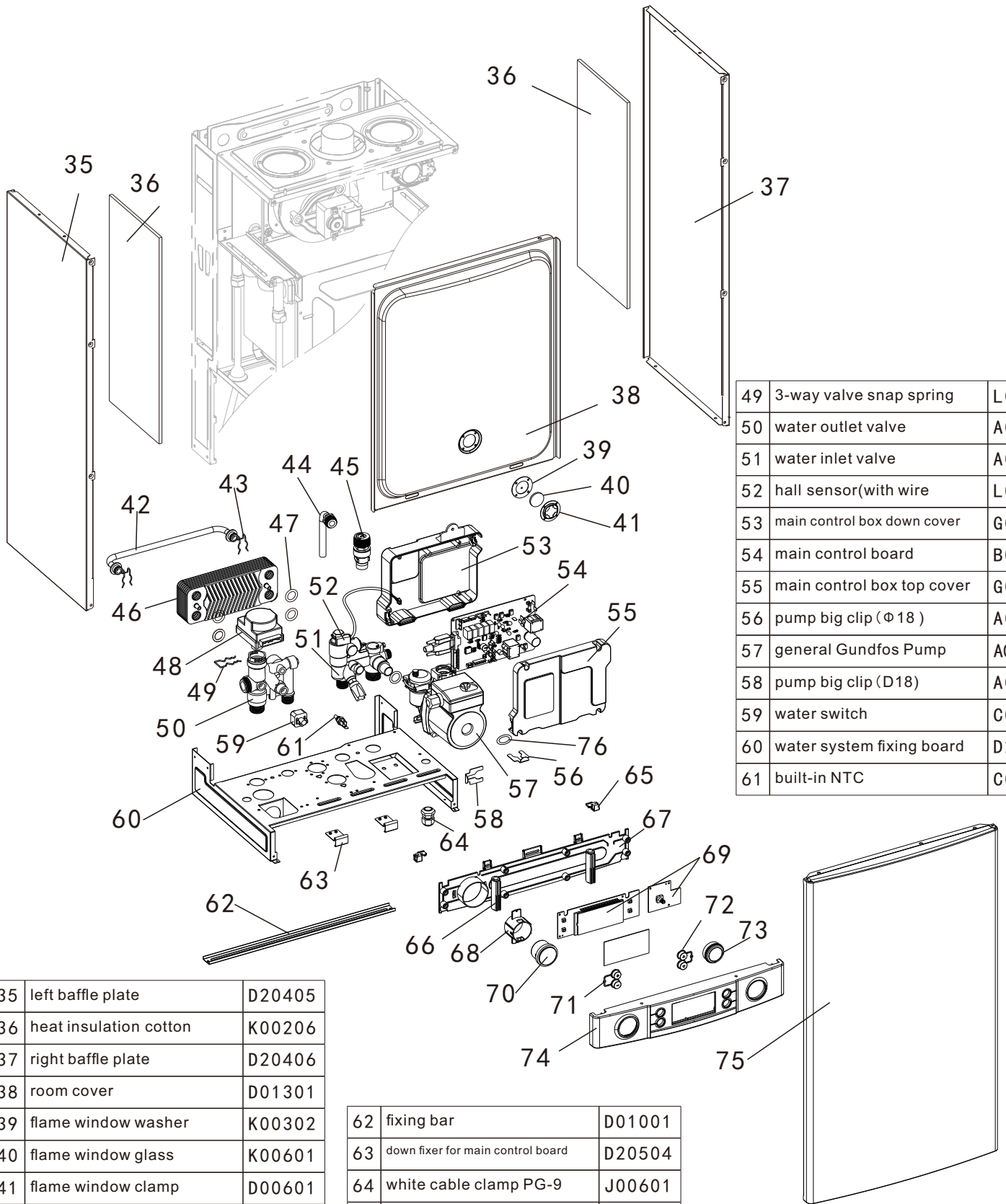
1	expansion tank	A00901
2	inlet air baffle plate	D00801
3	room top board component	D00701
4	wind pressure difference switch	C00503
5	expansion tank fixed support	D01401
6	pedestal component	D00203
7	left baffle plate	D01601
8	right baffle plate	D01602
9	combustion top board	D21504
10	combustion down board	D21503
11	aluminum fan fixing plate	D21506
12	85 fan down board	D21206
13	85 fan sealing cotton	K00505
14	85 fan	A00803
15	heat insulation down plate	K00109
16	heat insulation side plate	K00108
17	heat insulation top plate	K00110
18	combustion cover board	D21505
19	guide plate	D21507
20	room down board baffle plate component	D20305
21	heat exchanger	A00104
22	flat insert extreme temperature switch	C00602
23	heating inlet water pipe component	E00803
24	heating outlet water pipe component	E00802
25	fan fixing plate	D00901



26	fixer for HUBA air pressure switch	D21904
27	external NTC	C00307
28	expansion tank connecting pipe component	E00856

31	18kw burner	A00221
32	ignition needle	F01101
33	gas pipe component	E00857
34	ZhongXin gas valve C	A00704

# L1P15-F21S(T) 2/2



49	3-way valve snap spring	L00801
50	water outlet valve	A01012
51	water inlet valve	A01005
52	hall sensor(with wire	L02113
53	main control box down cover	G00104
54	main control board	B00130
55	main control box top cover	G00103
56	pump big clip (Φ18 )	A00403
57	general Gundfos Pump	A00310
58	pump big clip (D18)	A00404
59	water switch	C00405
60	water system fixing board	D21105
61	built-in NTC	C00301

35	left baffle plate	D20405
36	heat insulation cotton	K00206
37	right baffle plate	D20406
38	room cover	D01301
39	flame window washer	K00302
40	flame window glass	K00601
41	flame window clamp	D00601
42	Chunhui mono-thermic by-pass pipe	E02408
43	by-pass pipe snap hook	A01009
44	safety water pipe component	E00801
45	safety valve bayonet type	E01702
46	plate heat exchanger	A01011
47	O-ring(18*3.55)	A01007
48	3-way valve motor	A01110

62	fixing bar	D01001
63	down fixer for main control board	D20504
64	white cable clamp PG-9	J00601
65	down fixer for main control board	G01607
66	guide pillar	G01605
67	display board down cover	G01602
68	water pressure gauge glue cassette	G00805
69	display pane	B00120
70	water pressure gauge	C00203
71	plus&minus buttons	G01604

72	up&down buttons	G01608
73	knob	G01603
74	display board top cover	G01601
75	panel	D00124
76	pump seal ring (Φ17*4)	A00503