



ARISTON

SPARE PARTS EXPLODED VIEW GAS-WALL BOILER ATM. BURNER

Model

EGIS - AS

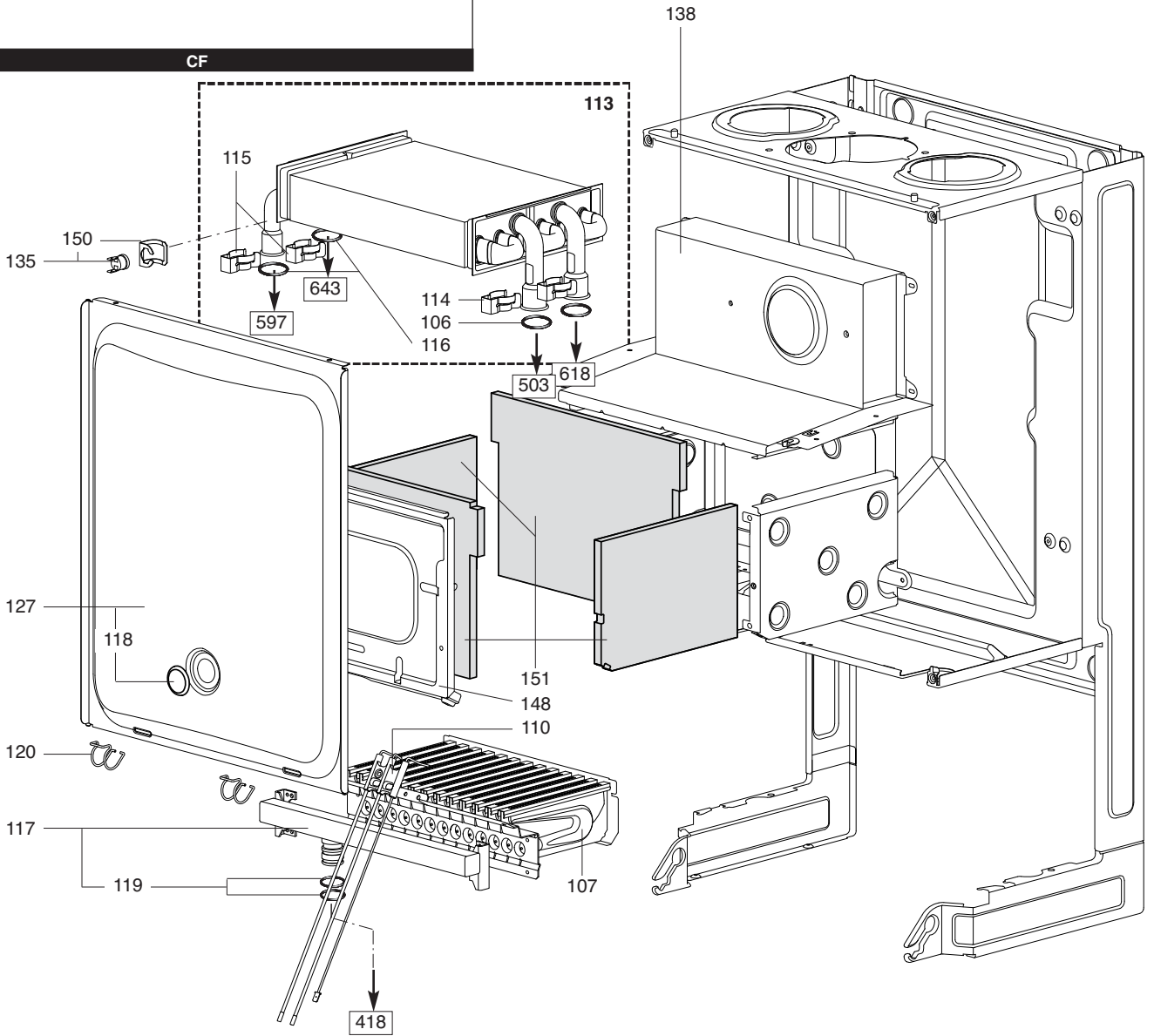
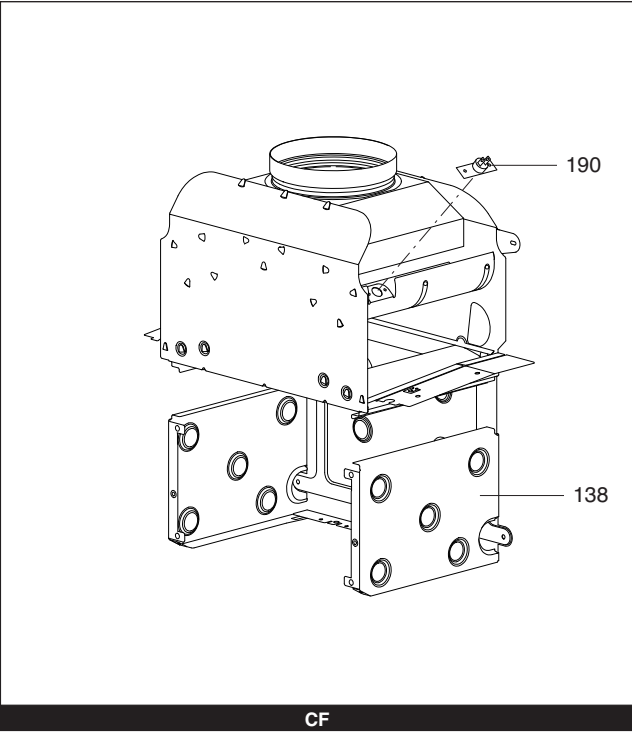
R8215807-07 - 24/10/2016

EGIS - AS

Gas-wall boiler atm. burner

| | | | | |
|---|---------|-------------------------|---------|---------|
| 1 | 3300252 | EGIS 24 FF NG (IT) | 01-2007 | 10-2009 |
| 1 | 3300253 | EGIS 24 FF LPG (IT) | 01-2007 | 10-2009 |
| 1 | 3300179 | EGIS 24 FF NG (PI) | 07-2007 | 08-2009 |
| 1 | 3300193 | EGIS 24 FF NG (EAA1) | 04-2007 | 11-2009 |
| 1 | 3300195 | EGIS 24 FF NG (EAA2) | 10-2006 | 12-2009 |
| 1 | 3300180 | EGIS 24 FF LPG (PI) | 06-2007 | 08-2009 |
| 1 | 3300320 | EGIS 24 FF NG | 06-2009 | 12-2011 |
| 1 | 3300321 | EGIS 24 FF LPG | 06-2009 | 12-2011 |
| 2 | 3300254 | EGIS 24 CF NG (IT) | 01-2007 | 10-2009 |
| 2 | 3300255 | EGIS 24 CF LPG (IT) | 01-2007 | 10-2009 |
| 2 | 3300181 | EGIS 24 CF NG (PI) | 07-2007 | 08-2009 |
| 2 | 3300194 | EGIS 24 CF NG (EAA1) | 04-2007 | 11-2009 |
| 2 | 3300196 | EGIS 24 CF NG (EAA2) | 10-2006 | 12-2009 |
| 2 | 3300182 | EGIS 24 CF LPG (PI) | 11-2007 | 12-2007 |
| 2 | 3300322 | EGIS 24 CF NG | 06-2009 | 12-2011 |
| 2 | 3300323 | EGIS 24 CF LPG | 06-2009 | 12-2011 |
| 3 | 3300183 | AS 24 FF NG (IT RO PI) | 06-2007 | 12-2009 |
| 3 | 3300184 | AS 24 FF LPG (IT RO PI) | 11-2007 | 11-2007 |
| 3 | 3300335 | AS 24 FF NG | 06-2009 | 12-2011 |
| 3 | 3300348 | AS-BIK 24 FF NG | 10-2009 | 12-2011 |
| 3 | 3300336 | AS 24 FF LPG | 06-2009 | 12-2011 |
| 4 | 3300185 | AS 24 CF NG (IT RO PI) | 07-2007 | 10-2009 |
| 4 | 3300186 | AS 24 CF LPG (IT RO PI) | 10-2006 | 10-2009 |
| 4 | 3300337 | AS 24 CF NG | 06-2009 | 12-2011 |
| 4 | 3300338 | AS 24 CF LPG | 06-2009 | 12-2011 |

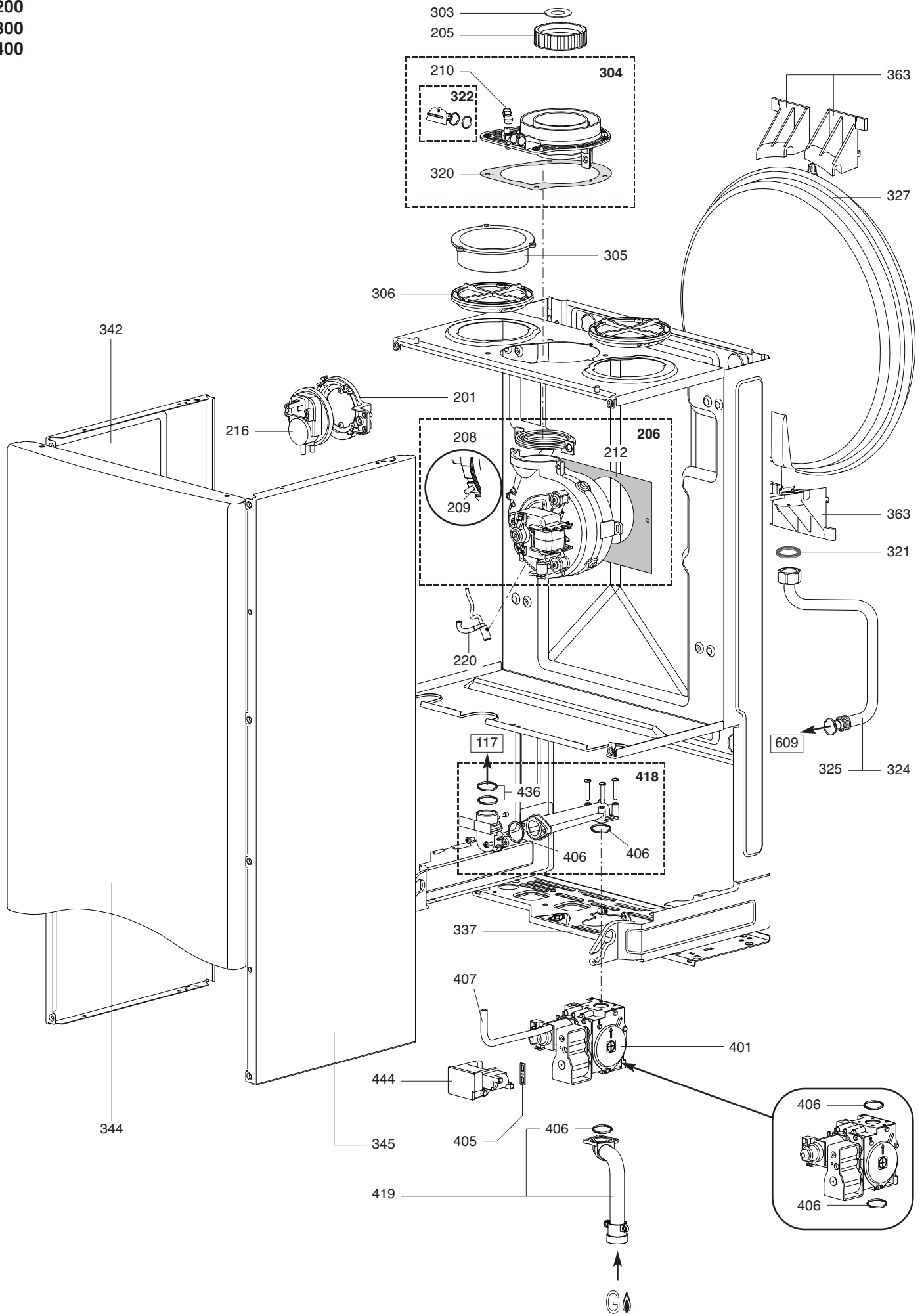
| Col | Reference | Model type | Begin | End |
|-----|-----------|------------|-------|-----|
|-----|-----------|------------|-------|-----|



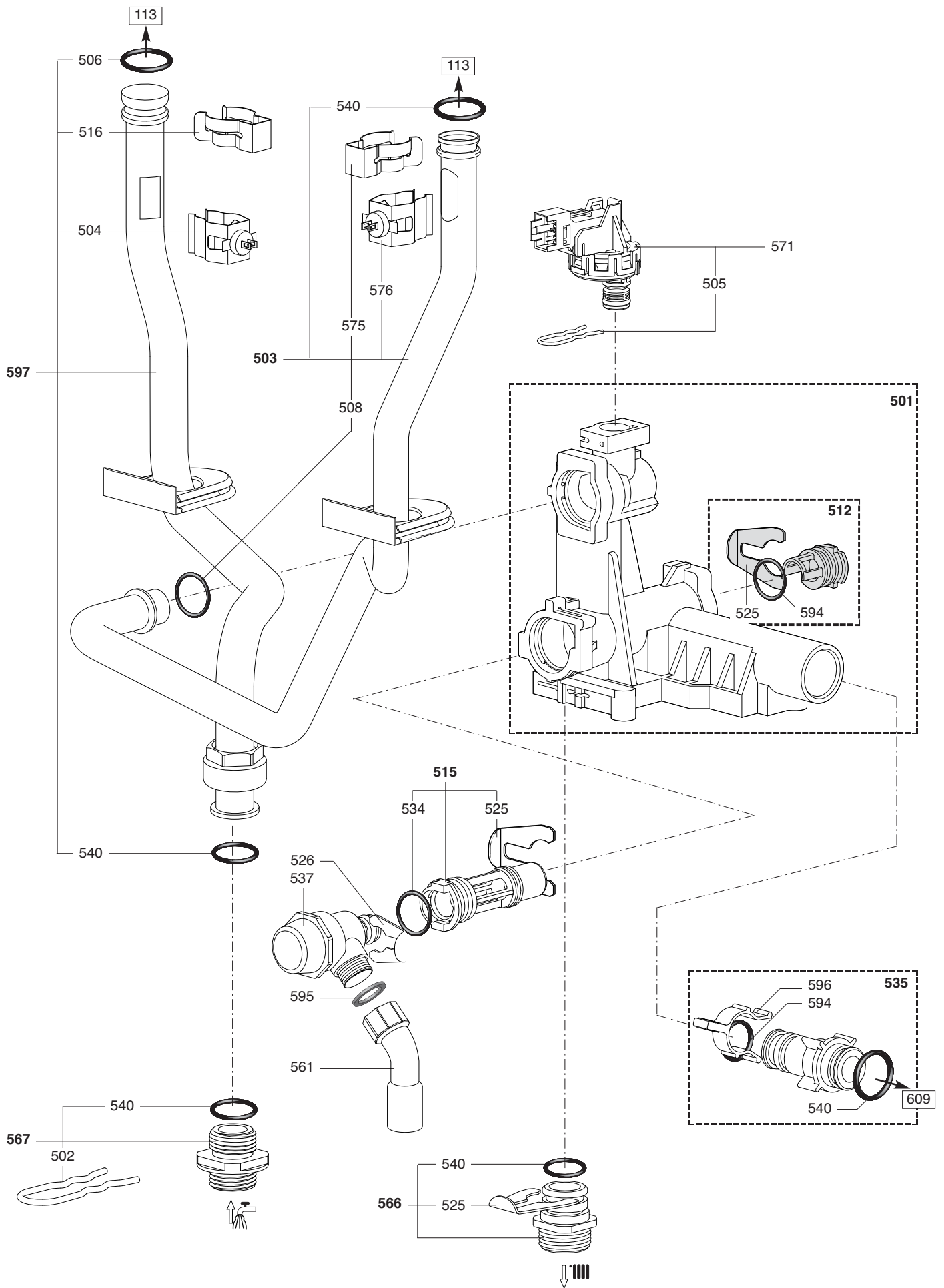
200
300
400

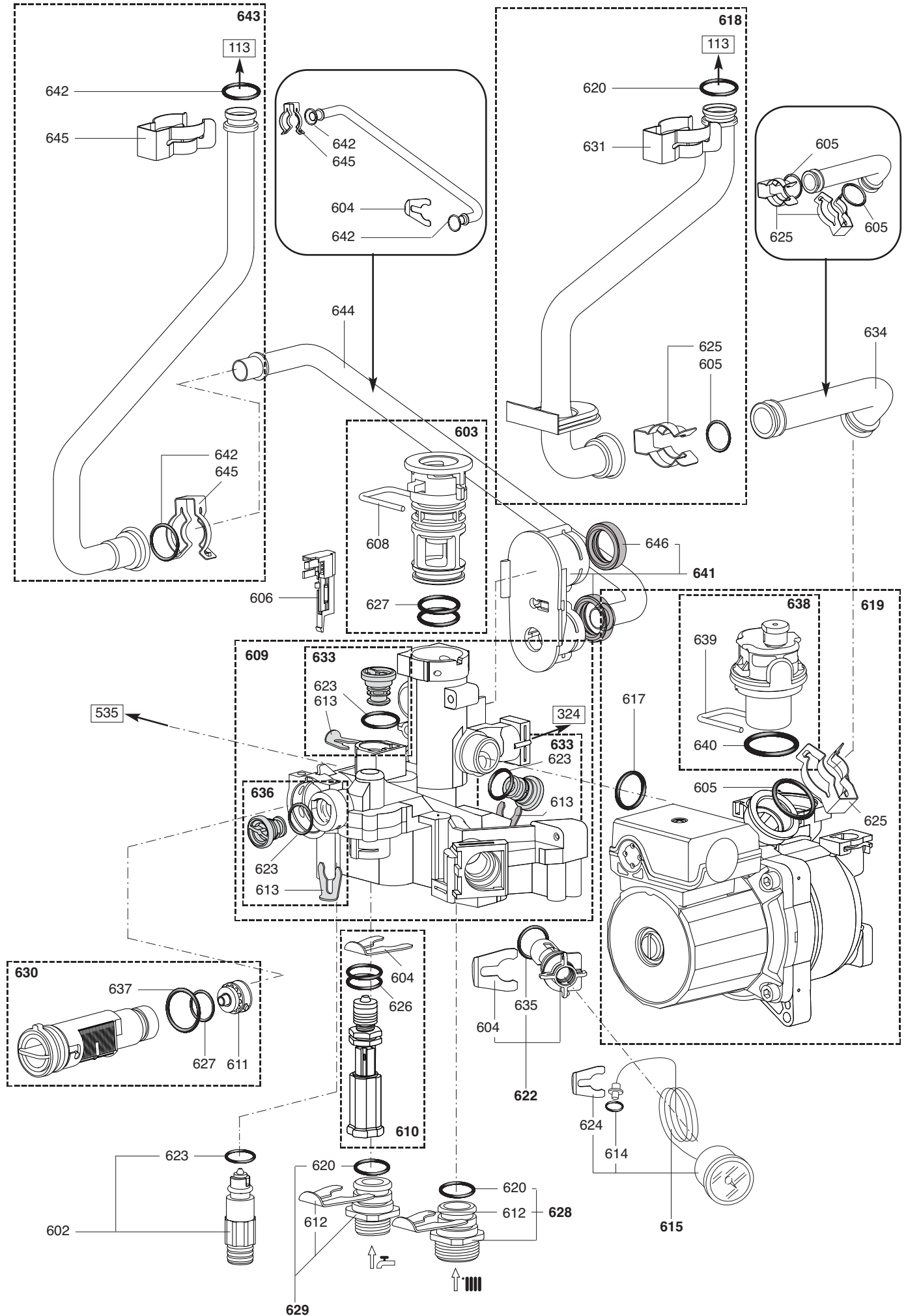
EGIS - AS

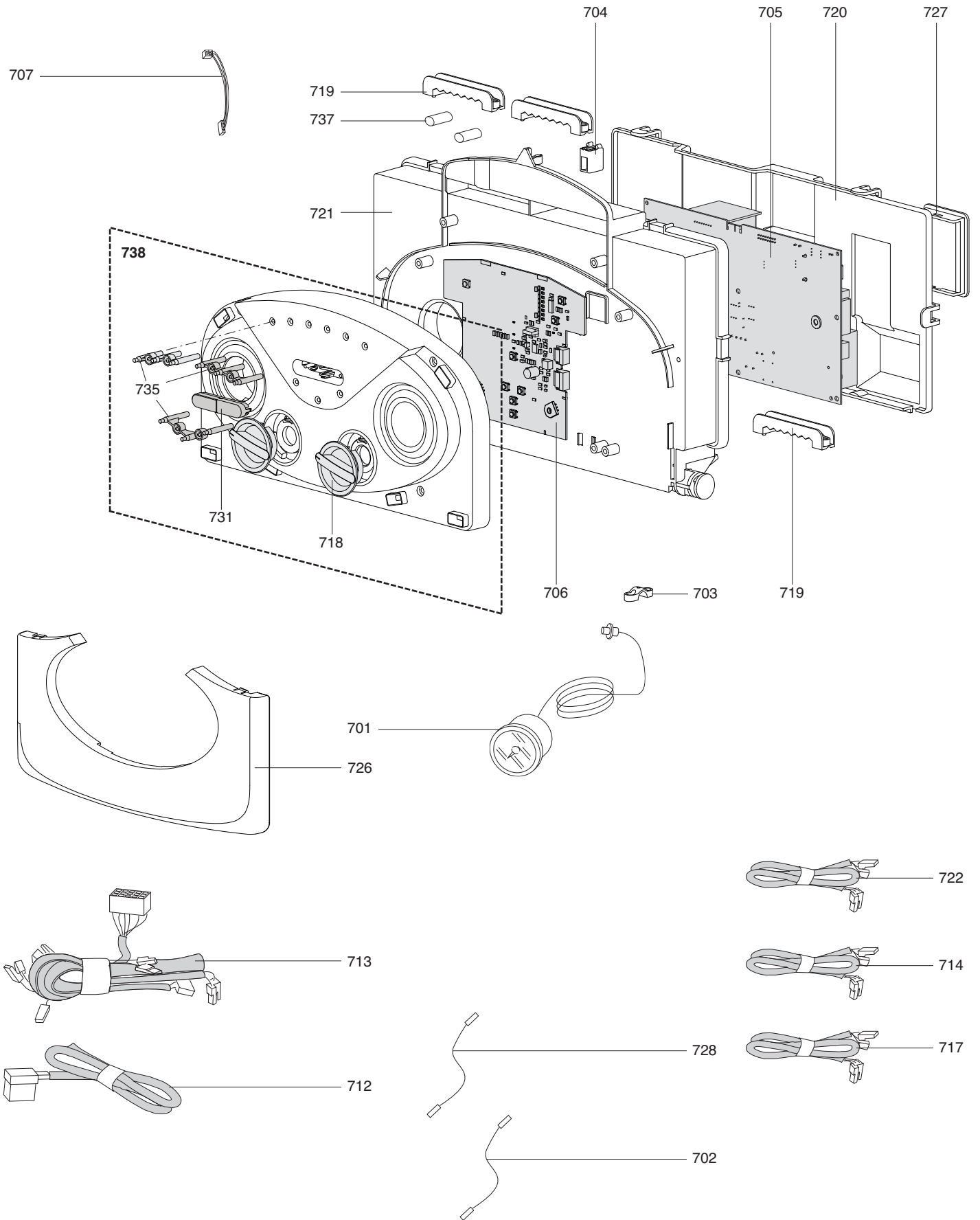
Gas-wall boiler atm. burner

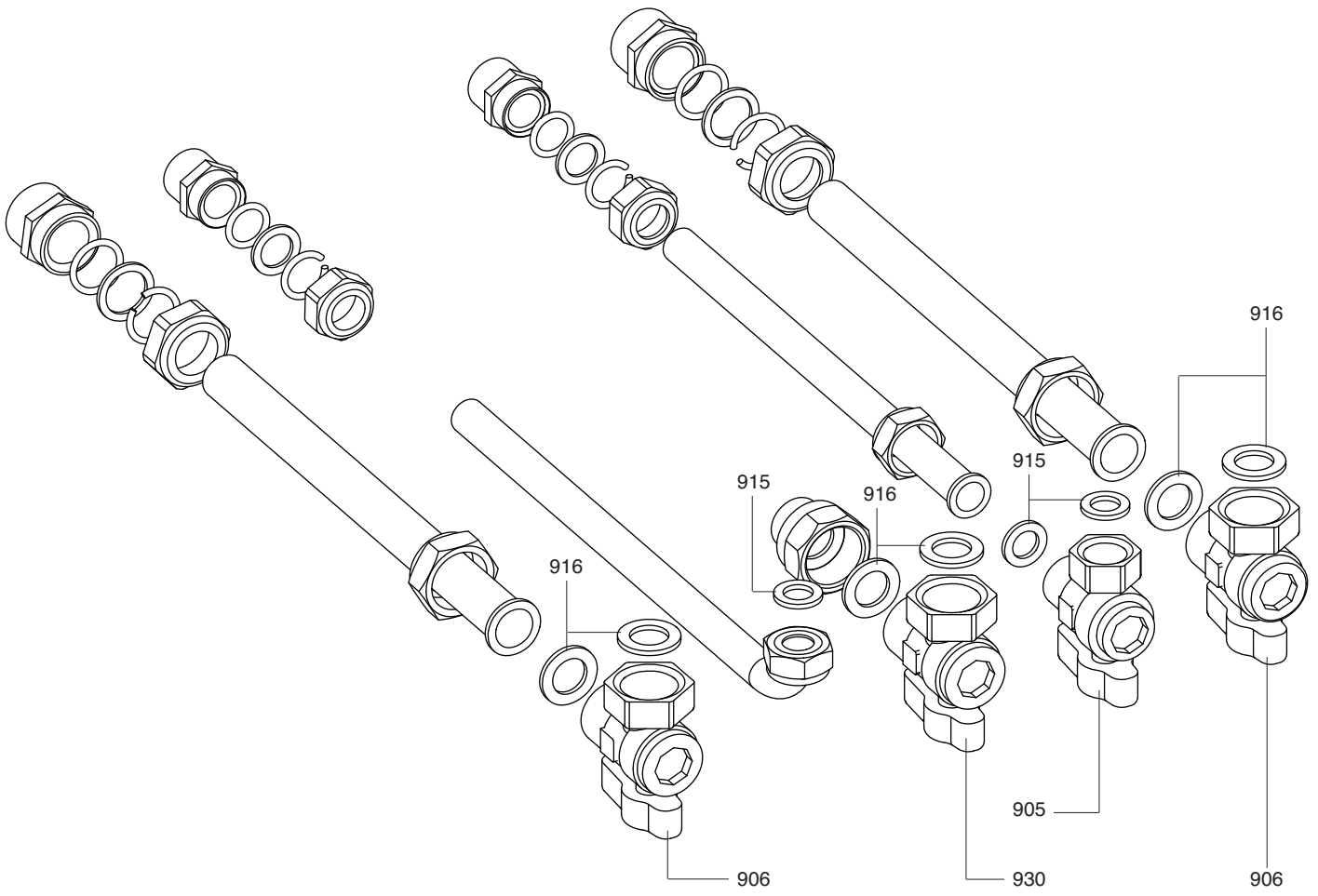


| ☺⇒ | Description | Manf. Pt. N | Type | | | | | | | | | | | | | | | | | | | |
|-------------|--------------------------------------|-------------|------|---|---|---|---|---|---|---|---|---|----|----|----|----|----|----|----|----|-------|-------|
| | | | | 1 | 2 | 3 | 4 | 5 | 6 | 7 | 8 | 9 | 10 | 11 | 12 | 13 | 14 | 15 | 16 | 17 | 18 | From |
| 0200 | ДЫМОУДАЛЕНИЕ И ВОЗДУХОПОДАЧА | | | | | | | | | | | | | | | | | | | | | |
| 0201 | КРОНШТЕЙН ПНЕВМОРЕЛЕ | 65104378 | | • | | • | | | | | | | | | | | | | | | | |
| 0205 | ПРОКЛАДКА КОЛЛЕКТОРА ДЫМОУДАЛЕНИЯ | 65104258 | | • | | • | | | | | | | | | | | | | | | | |
| 0206 | ВЕНТИЛЯТОР | 65104357 | | • | | • | | | | | | | | | | | | | | | | |
| 0208 | ПРОКЛАДКА ВЕНТИЛЯТОРА | 65104257 | | • | | • | | | | | | | | | | | | | | | | |
| 0209 | ТРУБКА ВЕНТУРИ 15/24 FF | 65106516 | | • | | • | | | | | | | | | | | | | | | | |
| 0210 | ЗАГЛУШКА ШТУЦ-ОВ КОНТРОЛЯ ПНЕВМОРЕЛЕ | 573329 | | • | | • | | | | | | | | | | | | | | | | |
| 0212 | ТЕПЛОИЗОЛЯЦИЯ ВЕНТИЛЯТОРА | 65104305 | | • | | • | | | | | | | | | | | | | | | | |
| 0216 | ПНЕВМОРЕЛЕ 50 Pa | 65104671-01 | | • | | • | | | | | | | | | | | | | | | | |
| 0220 | КОНДЕНСАТООТВОДЧИК | 65104623 | | • | | • | | | | | | | | | | | | | | | | |
| 0300 | КОРПУС | | | | | | | | | | | | | | | | | | | | | |
| 0303 | ДИАФРАГМА | 60001598 | | • | | | | | | | | | | | | | | | | | | |
| 0304 | ПАТРУБОК ДЫМОУДАЛЕНИЯ | 65105393 | | • | | • | | | | | | | | | | | | | | | | |
| 0305 | ПЕРЕХОДНИК РАЗД. СИСТЕМЫ ДЫМОМОУД. | 65104710 | | • | | • | | | | | | | | | | | | | | | | |
| 0306 | ЗАГЛУШКА ПОДАЧИ ВОЗДУХА | 65104249 | | • | | • | | | | | | | | | | | | | | | | |
| 0320 | ПРОКЛАДКА | 60000317 | | • | | • | | | | | | | | | | | | | | | | |
| 0321 | ПРОКЛАДКА 3/8" | 573521 | | • | • | • | • | | | | | | | | | | | | | | | |
| 0322 | ЗАГЛУШКА ШТУЦ-ОВ АНАЛИЗА ДЫМ. ГАЗОВ | 65104295 | | • | | • | | | | | | | | | | | | | | | | |
| 0324 | ТРУБКА РАСШИРИТЕЛЬНОГО БАКА | 65104253 | | • | • | • | • | | | | | | | | | | | | | | | |
| 0325 | О-КОЛЬЦО 8.9X2.7 | 61009834-14 | | • | • | • | • | | | | | | | | | | | | | | | |
| 0327 | РАСШИРИТЕЛЬНЫЙ БАК 8 Л | 65104261 | | • | • | • | • | | | | | | | | | | | | | | | |
| 0337 | ОСНОВАНИЕ ГИДРАВЛИЧЕСКОЙ ГРУППЫ | 65104311 | | • | • | • | • | | | | | | | | | | | | | | | |
| 0342 | ПАНЕЛЬ КОРПУСА (ЛЕВАЯ) | 65104242 | | • | • | • | • | | | | | | | | | | | | | | | 05/07 |
| | ПАНЕЛЬ КОРПУСА (ЛЕВАЯ) | 65105676 | | • | • | • | • | | | | | | | | | | | | | | 06/07 | |
| 0344 | ПАНЕЛЬ КОРПУСА (ПЕРЕДНЯЯ) | 65104299 | | • | • | • | • | | | | | | | | | | | | | | | |
| 0345 | ПАНЕЛЬ КОРПУСА (ПРАВАЯ) | 65104241 | | • | • | • | • | | | | | | | | | | | | | | | 05/07 |
| | ПАНЕЛЬ КОРПУСА (ПРАВАЯ) | 65105677 | | • | • | • | • | | | | | | | | | | | | | | 06/07 | |
| 0363 | КРОНШТЕЙН РАСШИРИТЕЛЬНОГО БАКА | 65104696 | | • | • | • | • | | | | | | | | | | | | | | | |
| 0400 | ГАЗОВАЯ ЧАСТЬ | | | | | | | | | | | | | | | | | | | | | |
| 0401 | ГАЗОВЫЙ КЛАПАН | 65104254 | | • | • | • | • | | | | | | | | | | | | | | | |
| 0405 | ПРОКЛАДКА БЛОКА РОЗЖИГА | 574279 | | • | • | • | • | | | | | | | | | | | | | | | |
| 0406 | О-КОЛЬЦО 22.22X2.62 | 65104304 | | • | • | • | • | | | | | | | | | | | | | | | |
| 0407 | ТРУБКА EPDM | 65104296 | | • | • | • | • | | | | | | | | | | | | | | | |
| 0418 | ПАТРУБОК (ГАЗОВЫЙ КЛАПАН/ГОРЕЛКА) | 65104230 | | • | • | • | • | | | | | | | | | | | | | | | |
| 0419 | ТРУБКА ПОДАЧИ ГАЗА | 65104251 | | • | • | • | • | | | | | | | | | | | | | | | |
| 0436 | О-КОЛЬЦО 17.17X1.78 | 65104303 | | • | • | • | • | | | | | | | | | | | | | | | |
| 0444 | БЛОК РОЗЖИГА | 65104653 | | • | • | • | • | | | | | | | | | | | | | | | |

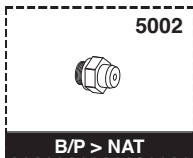
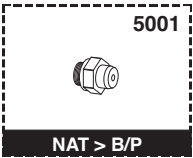








5000



LIST OF THE ABBREVIATIONS

| | |
|-------------|--|
| HW | : Hot water. |
| CW | : Cold water. |
| C | : Ceramic resistance (normal heating). |
| Ca | : Ceramic resistance (accelerated heating) |
| TP | : Immersion heater. |
| 1F | : With fittings. |
| 2F | : Without fittings. |
| 3F | : With fittings and another outlet connection. |
| AMI | : With mixing valve. |
| SMI | : Without mixing valve. |
| PUISS | : Power of th appliance. |
| PN | : Appliance with normal pression. |
| LP | : Appliance with low pression. |
| PV | : Appliance with variable power. |
| PF | : Appliance with fixed power. |

IDENTIFICATION PLATE

SERIAL NUMBER

10 Characters :

04 05 125 011
 Year of manufacture Manufacturing day Sequential number

11 Characters :

1 95 065004 - 31
 Month of manufacture : from 1 to 9 → Jan. to Sep.,
 O → Oct., N → Nov.,
 D → Dec. Technical number of the appliance
 Sequential number
 Year of manufacture

19 Characters :

08 05 0013199 900640031
 Year of manufacture Month of manufacture Product reference
 Sequential number

20 Characters :

3675007 XX 2 07 070 00315
 Product reference Millennium of manufacture Sequential number
 Manufacturing day Year of manufacture

21 Characters :

3675007 XX 07 070 0000315
 Product reference Year of manufacture Sequential number
 Manufacturing day